



This Collection is a combination of traditional and modern, using Bissau Guinea traditional fabric. Incorporating it into my style of dress, to embrace my culture and question the way we could use the fabric by experimenting with it in my designs and textile. Also for young people to wear it, make it fashionable by embracing their culture... therefore to encourage me to make garments that I would wear in my casual day or going out for dinner, birthday party, events ... I want to break down the rule of just wearing the traditional fabric for ceremonies, weddings etc into to a everyday/now a days type of clothing I want to make people feel empowered by their heritage.

concept board



concept board

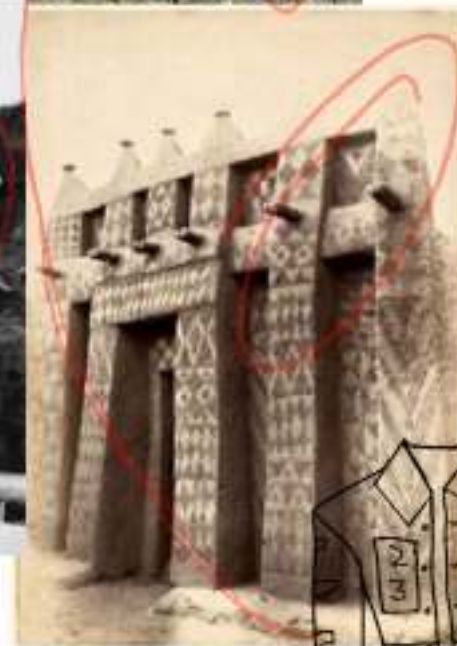


Family and “pano di pinti “





Buildings/objects with different patterns

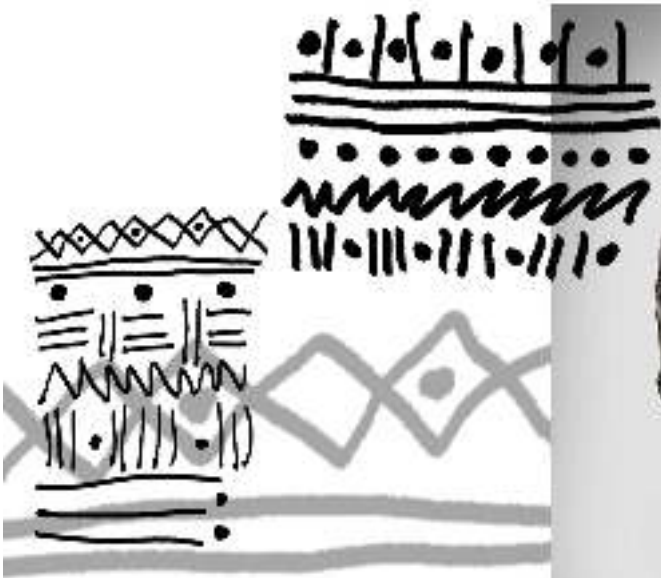


Buildings/objects with different patterns











Bwa Plank Masks

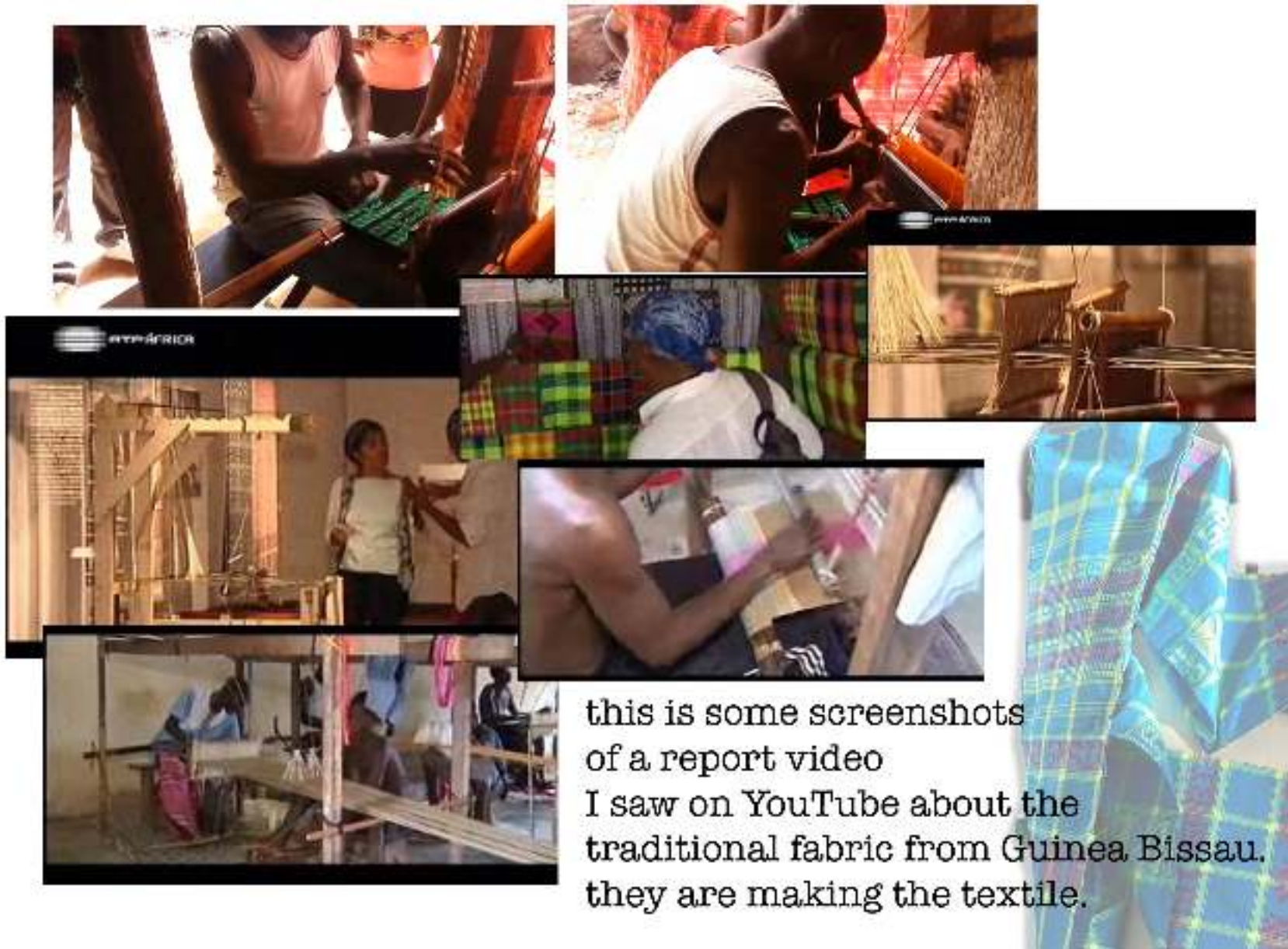


Kitenge Wraps









this is some screenshots
of a report video
I saw on YouTube about the
traditional fabric from Guinea Bissau.
they are making the textile.

The style of patterning on the garments, robes, body wraps and aprons that adorn certain tribes can also give us significant insight into their social and religious backgrounds.



Bold patterned kibanga wraps, Zanzibar, ca 1900

Bold pattern either painted, embellished, carved or etched is a powerful and expressive component of African mask design. Most patterns tend to be geometrical and symmetrical and often provide distinguishing marks for identifying whether the mask is male or female.



Bwa plank masks

Patterns on masks and textiles were used as a form of identity for tribes and outsiders could be easily identified if their masks and robes were foreign to the area.



elephant mask, 1970



Elephant maskers, Bamileke, Cameroon-1930

skirt experimentation



I made the skirt, but it didn't fit her so I had redo it on her measurement



I had to fix the bodysuit with a panel at the front.



skirt and bodysuit fitting process



make it bigger and able to move on it



took out the drawstring

body suit more higher to see the skin





Trying on
the trousers
to see
fits, draw
them to see
line as
was being
it created
wrapped.

first toile trousers



Loose shirt

Draped shirt

This is a draped shirt I made inspired by the way of the fabric by the way of wrapping on the body.



Fittings 1- here is some of the adjustments made, I don't agree with everything i don't think silky on the trousers would work and I still want to have the traditional fabric and my own print for this collection tion

second fitting



This was the second fitting where there is some changes and add on for a better outcome, there's some things that are highlighted to change and figure out the colours and fabric to use



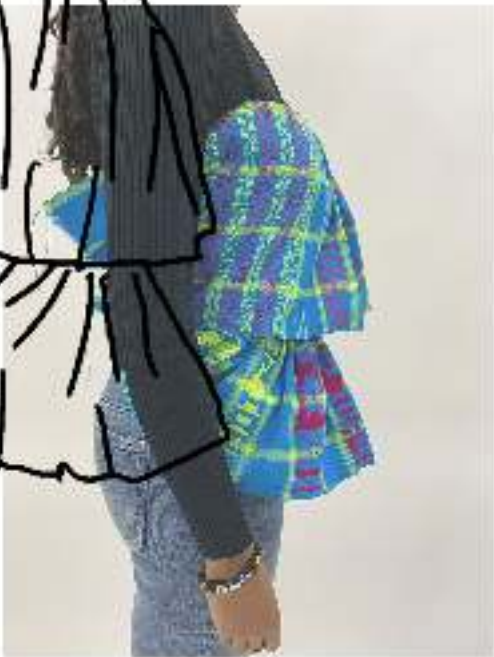


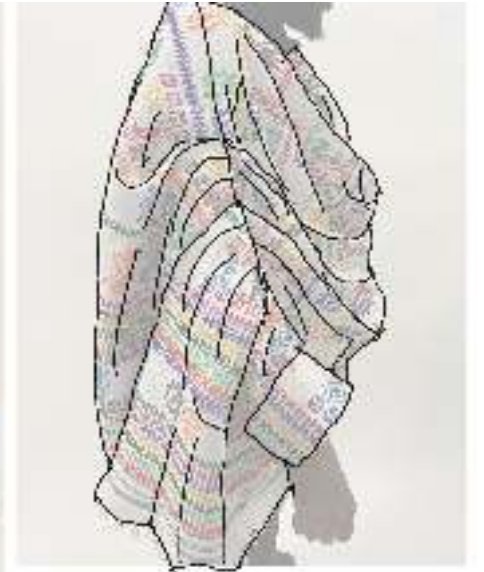
Final Fitting

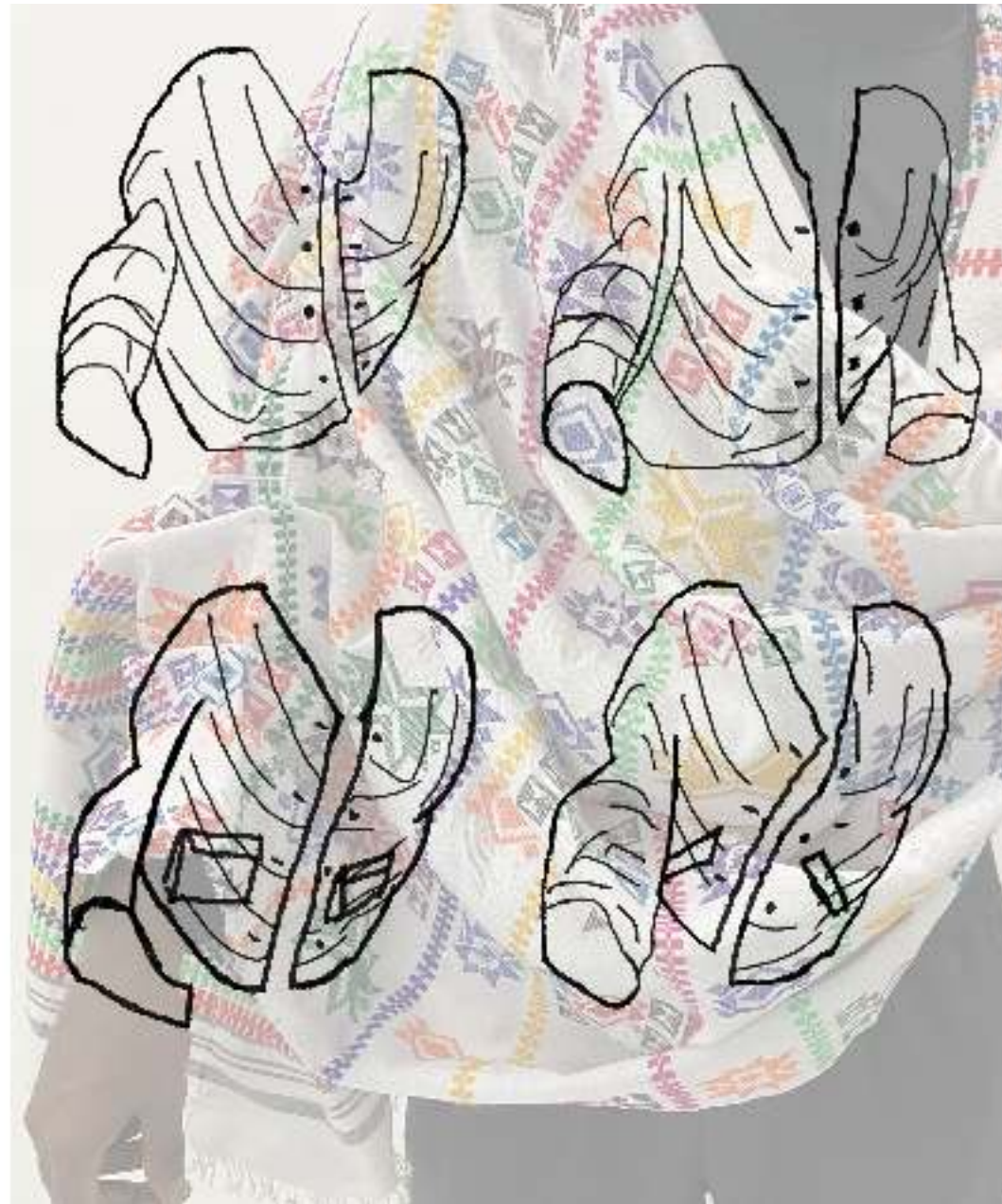


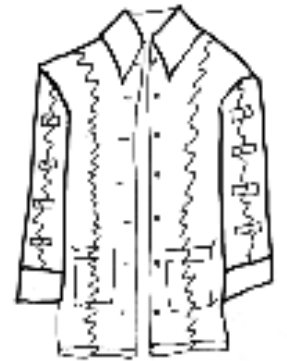
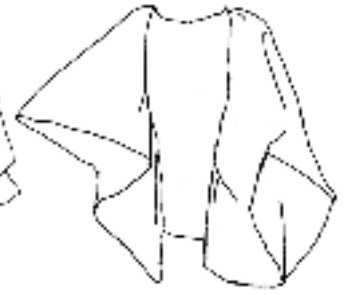
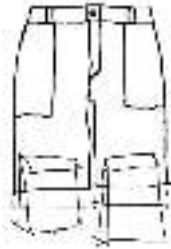
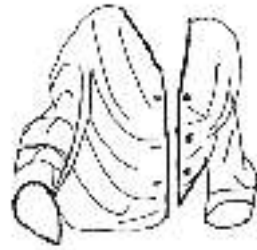
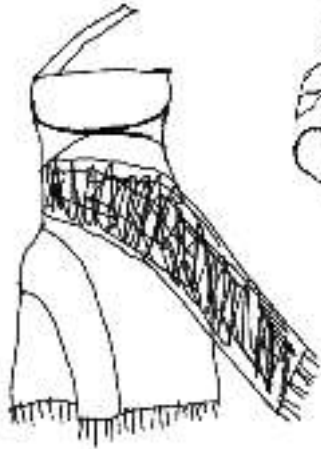
this is the final fitting and work program















c
o
l
u
r
r
b
o
a
r
d



fabric board

Female/Male

Age: 20+

Hobbies: Paint, Music, Singing, Dancing... they are influencers on socialmedia

They like to go out to eat, go to cinema, spend time with family and friends.

They shop on brands such as Chanel, Dior, Louis Vuitton, Prada etc...

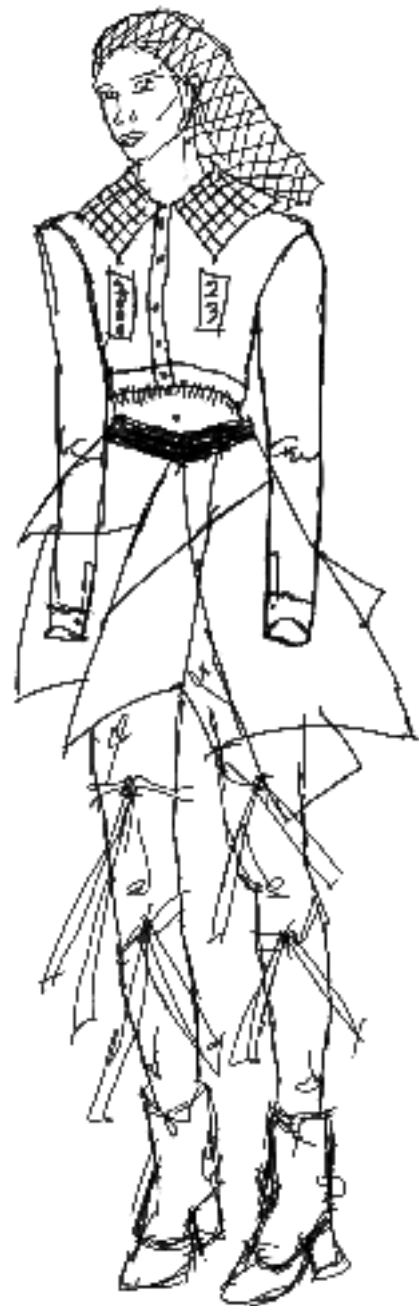
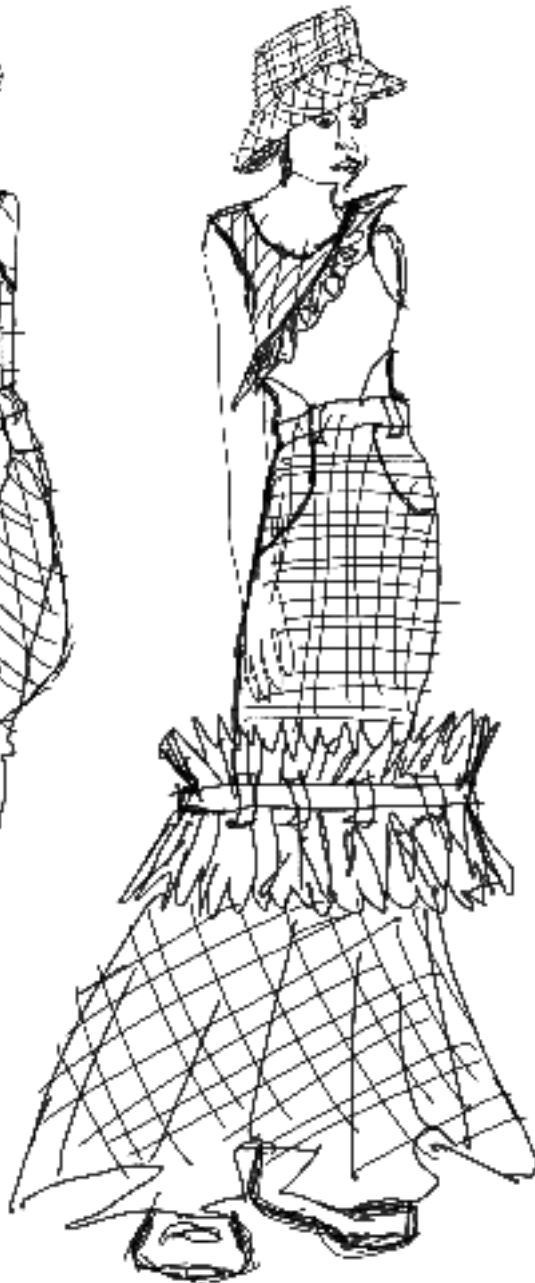
They like to travel, meet new people and learn different cultures.

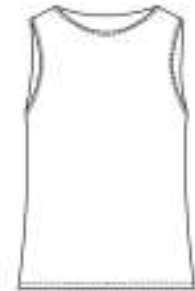
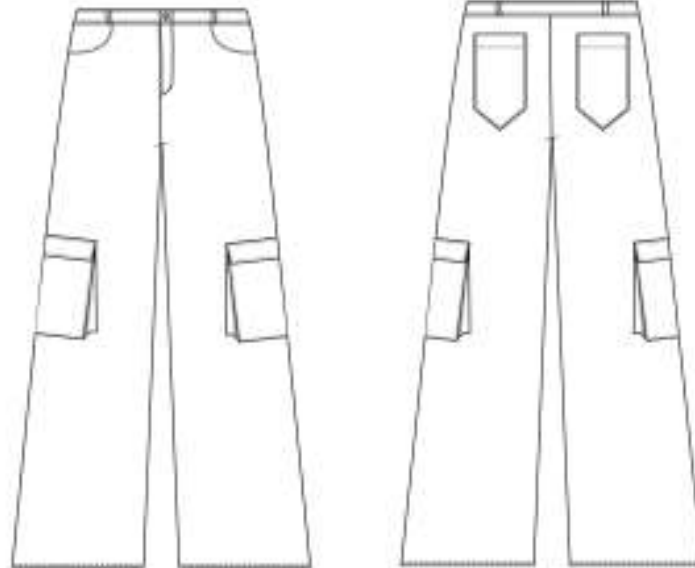
m
a
l
e

f
e
m
a
l
e

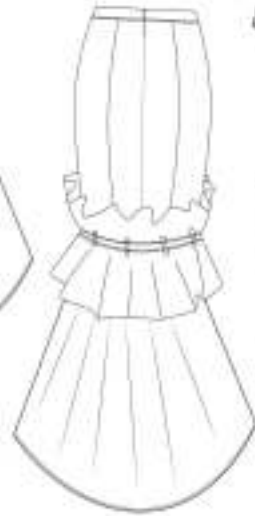
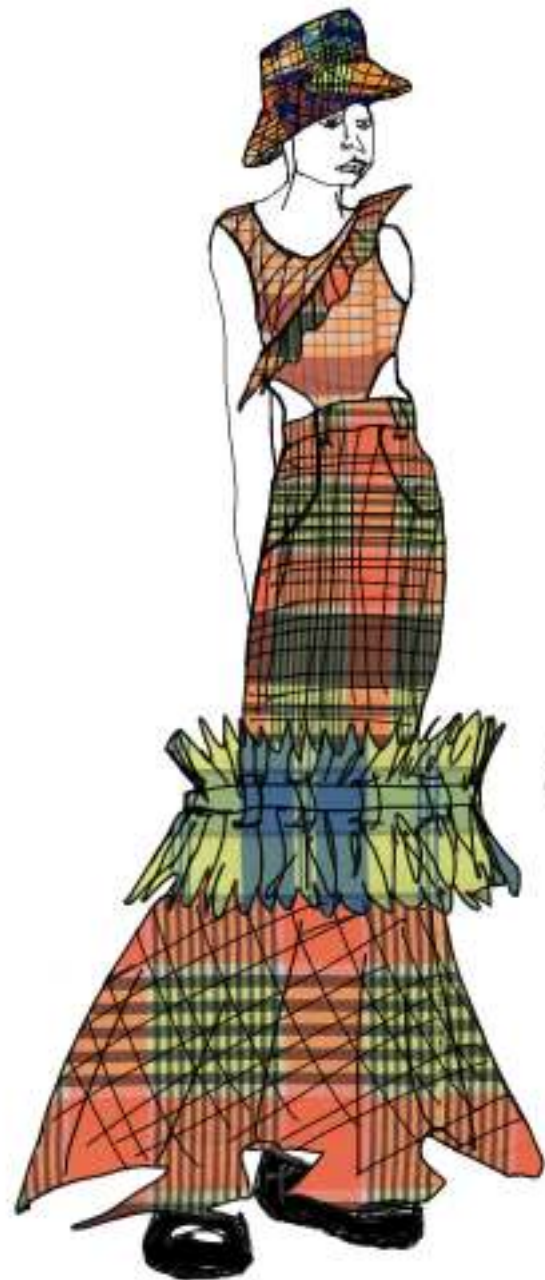
20+



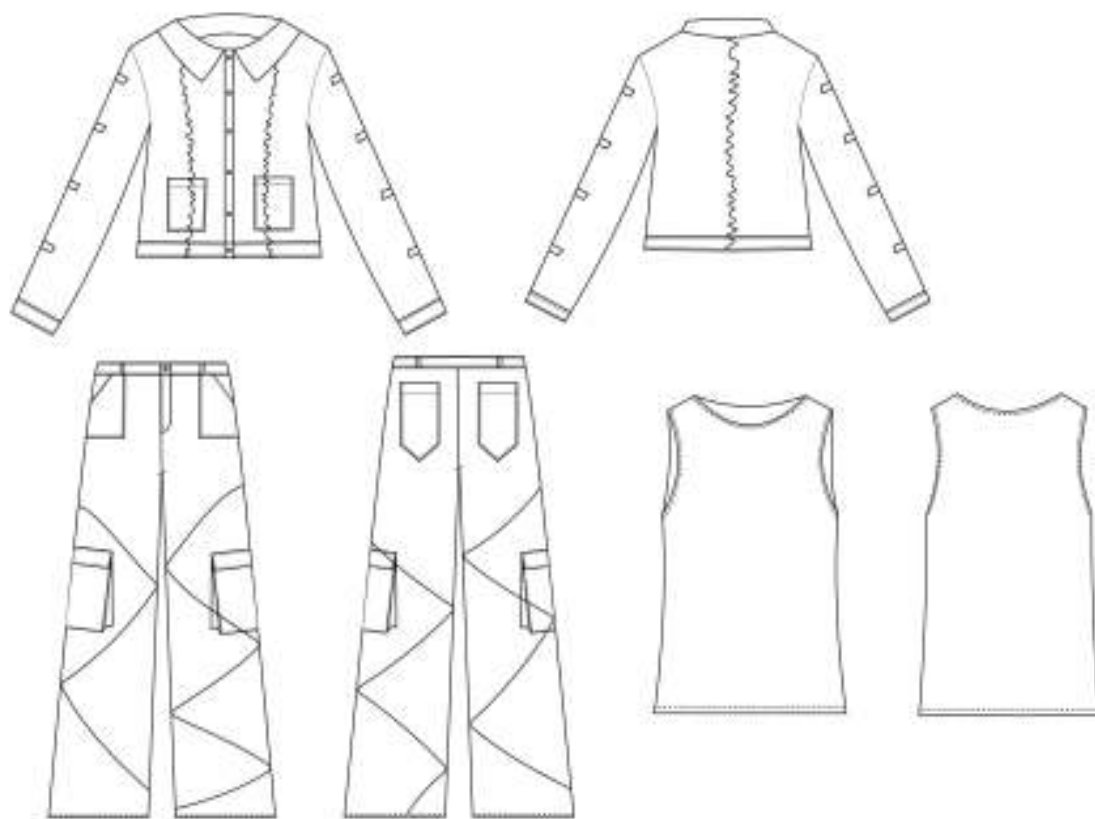




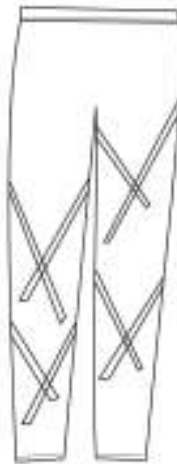
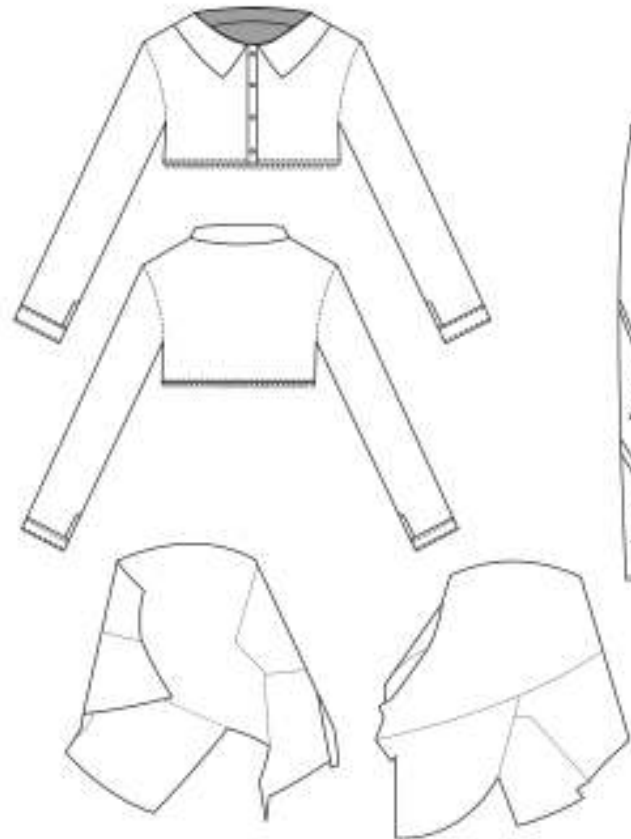
DASILVA



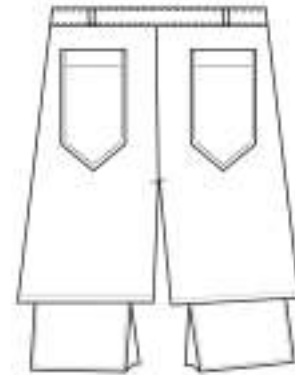
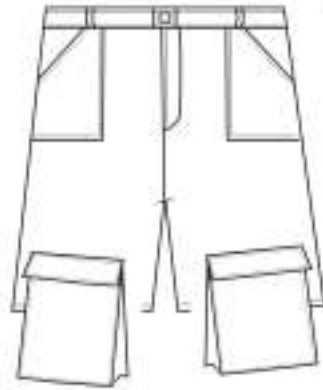
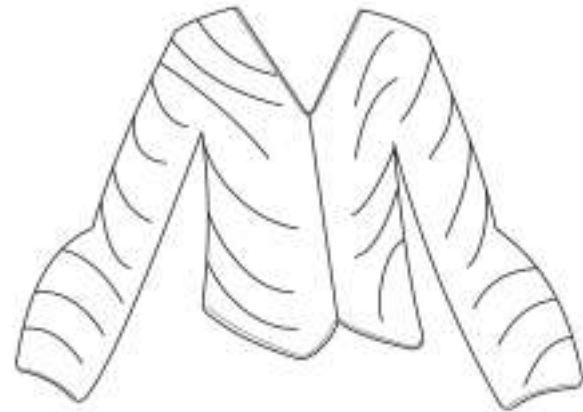
DASILVA

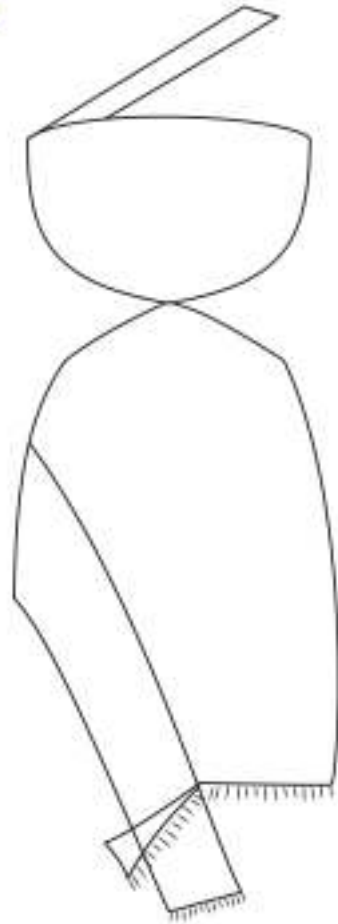


DASILVA



DASILVA





DASILVA













STILLS

DASILVA



SHUNNS

DASILVA