



SS:23

Concept

I explore, through fashion, their experience of how it feels to have a hypoglycaemic incident (hypo), and to have to inject or use a pump, often in front of others, in order to survive. I represent this through fashion form, fabric and detail, combined with the mechanical elements of the process.

Ryan and Gail were both diagnosed with Type one diabetes aged 13.



Siphon SS:23
Hollie Lesley Haughin

I am inspired by my brother getting his bloods taken and the liquid filling up the tube.



Colour & Fabric

- 4 Way stretch jersey
- Silver Nylon fabric for bag
- Black leather for shoes
- Ivory Duchess satin
- Teal Duchess satin
- 100% WOOL

- 4 Way stretch jersey
- 100% WOOL
- Duchess Silver satin
- Polyamide satin
- 100% WOOL
- Polyamide Duchess satin
- White PLA 3D Printer fabric

Fabric - clear plastic tubes

Grey velvet ribbon

Test Black

Result Grey

Protein Neg Green

Ph 8.5 Teal

Trace Cream

Leukocytes Silver

Siphon SS:23
 Hollie Lesley Haughin



Interview Research

I decided to interview my brother and aunty. This inspired my project as I really got to understand what it is like living with type one diabetes.

‘It’s life - threatening’

‘I have a fear of needles’

‘If you don’t have your insulin you will eventually die’

‘My pancreas just stopped working’



Type 1 Diabetes is where your pancreas stops working properly, consequently your body no longer produces insulin.

Humans need insulin to live

Deconstructed Tailor Jacket

250
200
150
100
50

Collar and under collar

I have deconstructed a Richard James Mayfair and an Antique Rogue Tailors Jacket to understand every key area and how this is made.

The Canvas shoulder attached is a sleeve head roll and under arm.

Canvas shoulder showing multiple layers.

Deconstructed piece including pocket opening.

Fashioning Masculinities
V&A Museum

Richard James
Bespoke inside jacket

520 500 120 100 20

High Rise Jacket Development

Development stages of the Jacket.

High Rise Jacket is inspired by symptoms of having a hypo.

Third Toile made in wool, developed into foam shoulder pad and padded front right side.

Changed the Jacket block to create a more fitting shape.

First, the shoulder started with a structured shoulder piece.

Cut the jacket short with a curve around the waist.

Curve around the sleeve to correspond with the waist.



Look One Fitting

Skirt Development

250

200

150

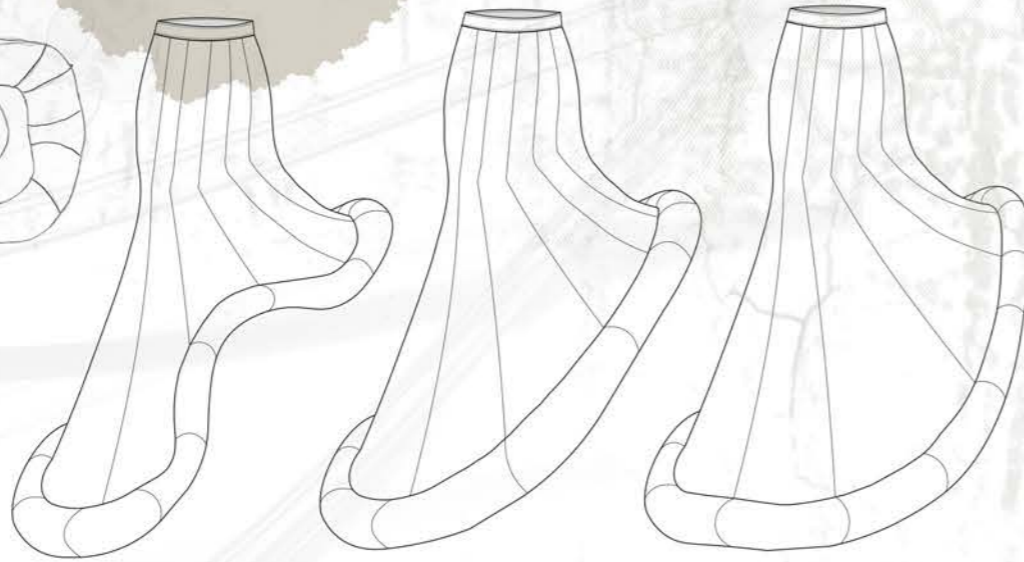
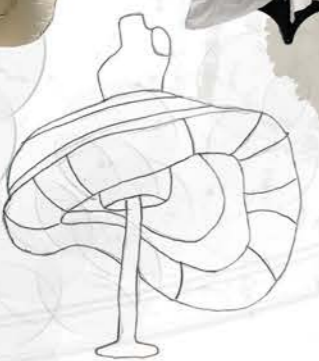
100

50

The Skirt shape has been inspired by the paddling pool skirt I made for my artefact.



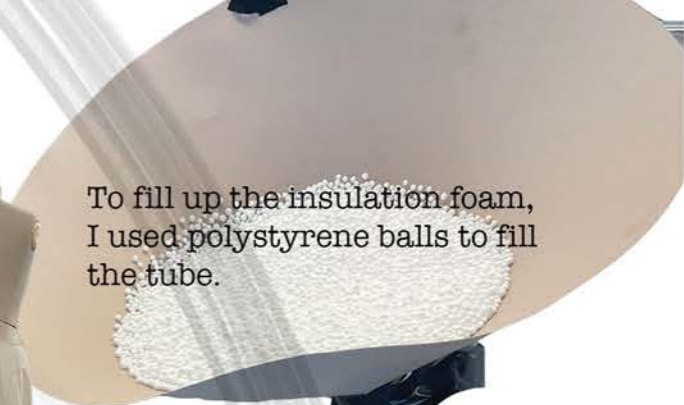
Started adding panels into the skirt.



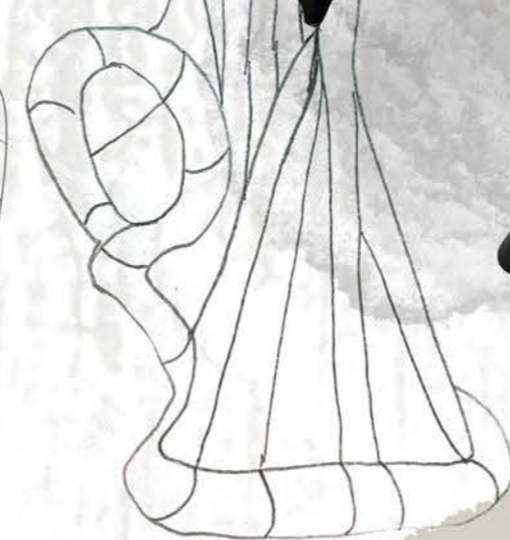
I first of all tested out the shape in calico, then I tested the shape out in Duchess satin to see how this reacts.



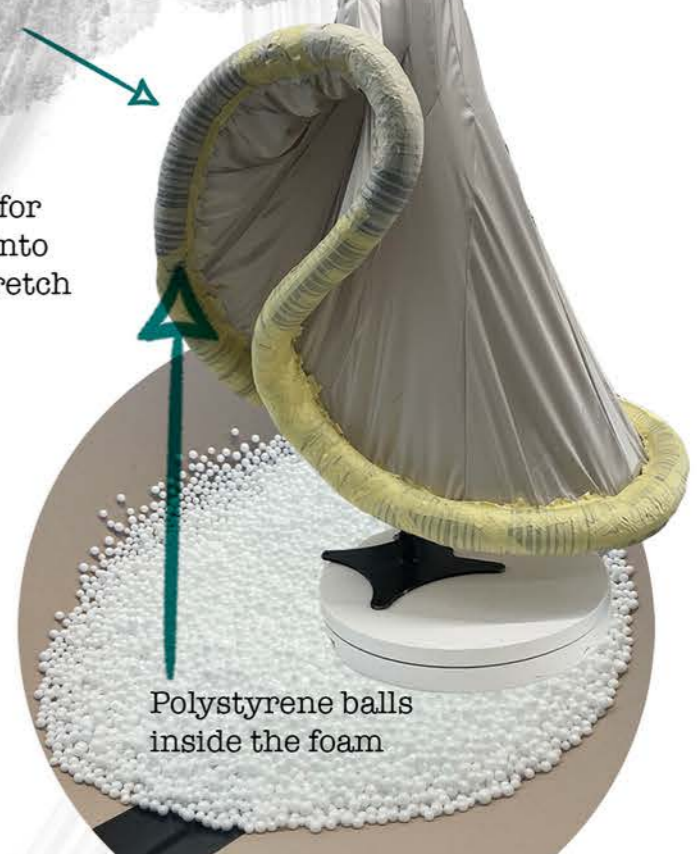
To fill up the insulation foam, I used polystyrene balls to fill the tube.



Creating a new pattern for the bottom of the skirt into panels using a 4 way stretch jersey.



Polystyrene balls inside the foam

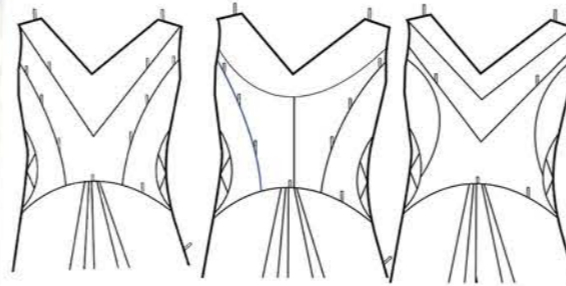


Second Look with Mechanical Elements

250
200
150
100
50



Development seam placement



The tubes will be delicately sewed into the seams with velvet ribbon.

To develop look two I have taken the panels from my first look into second look creating a beautiful shape to the womens body.

water and air running through the clear tubes. I used a Vacuum pump, which is the power to run the water and air around the tubes.

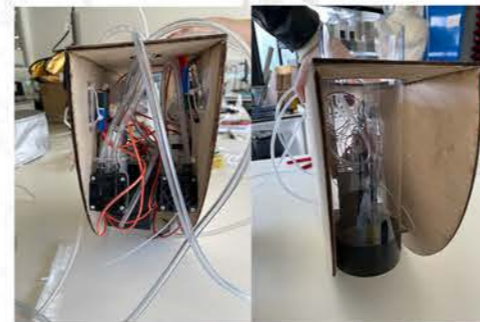
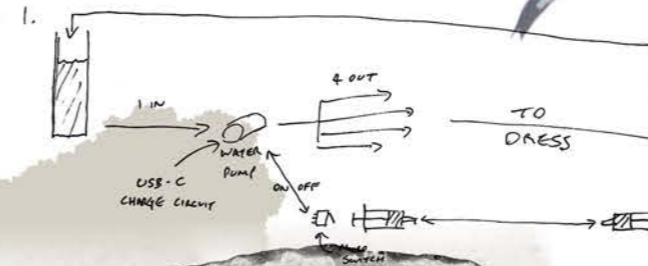
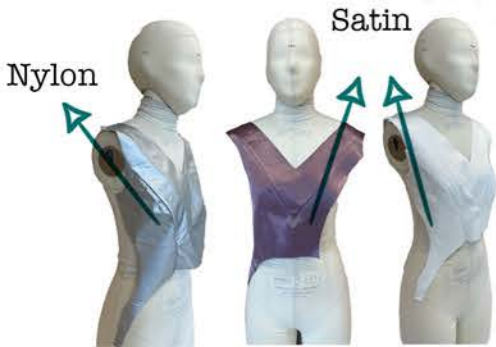
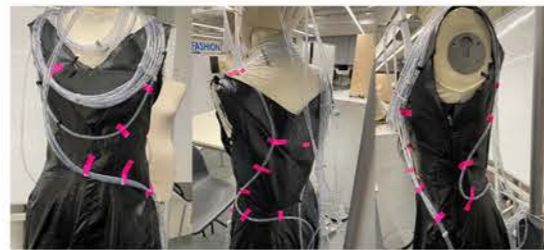


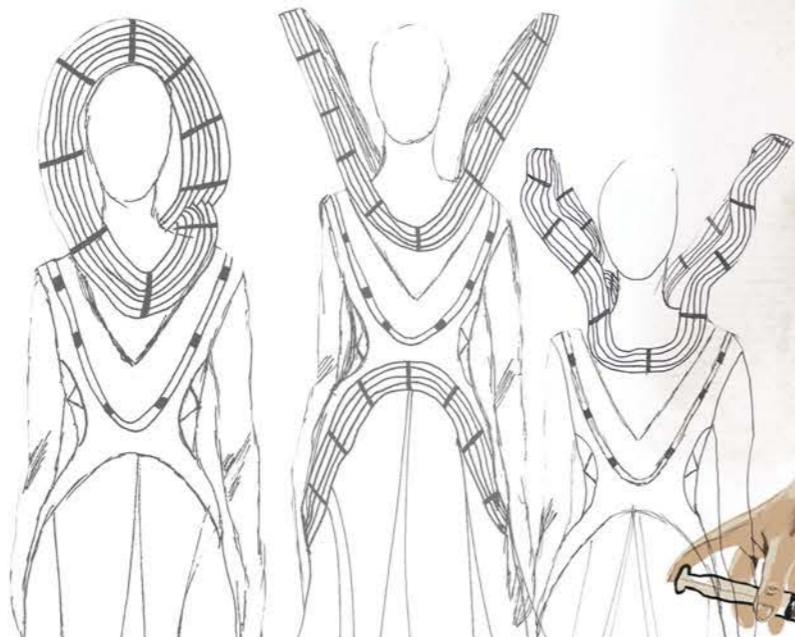
Diagram One - Water running around the tubes



Development of tube placement



Fabric development from nylon to satin



Water runs around the tubes

Siphon SS:23

Hollie Lesley Haughin

Accessories & Styling

250

200

250

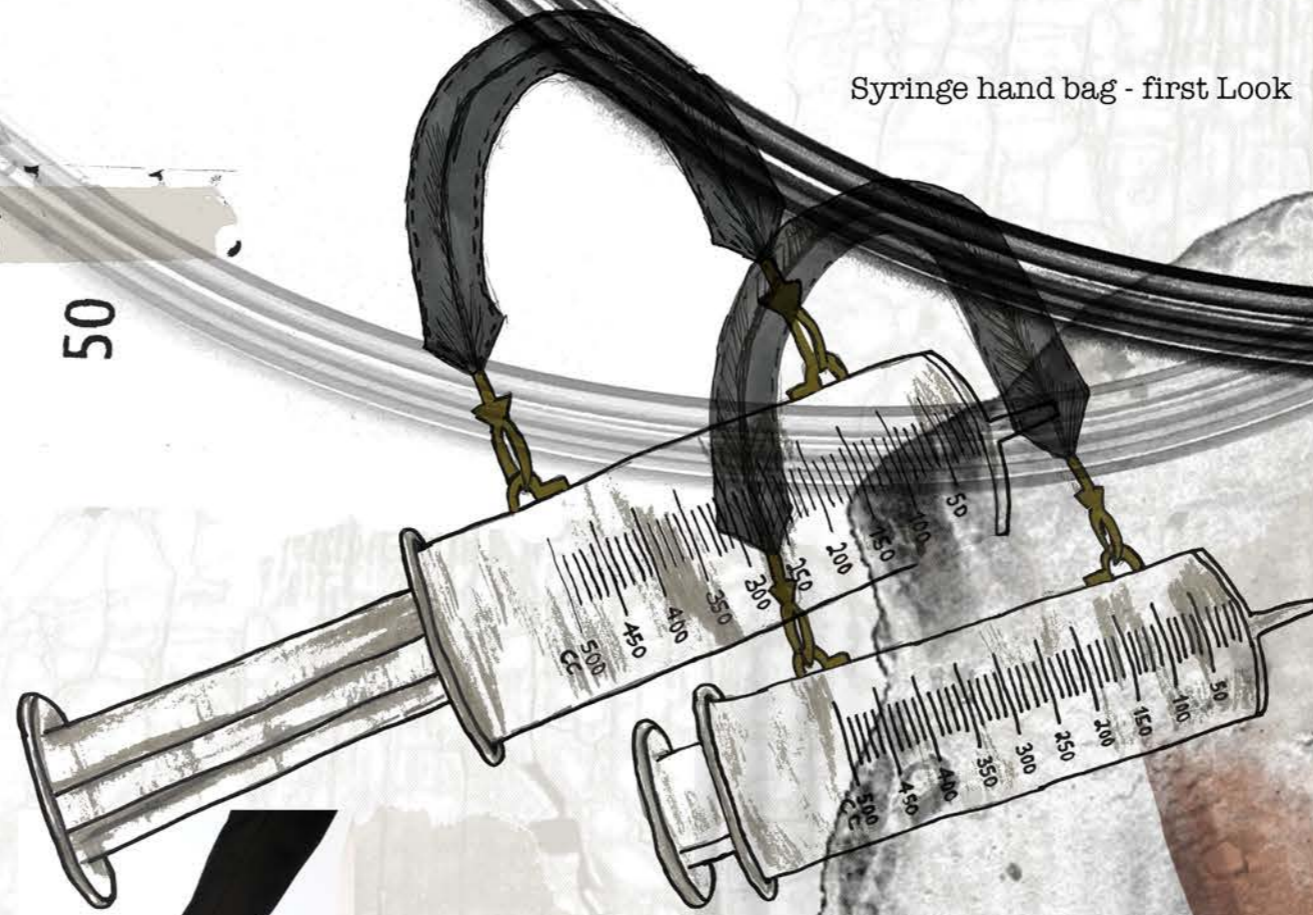
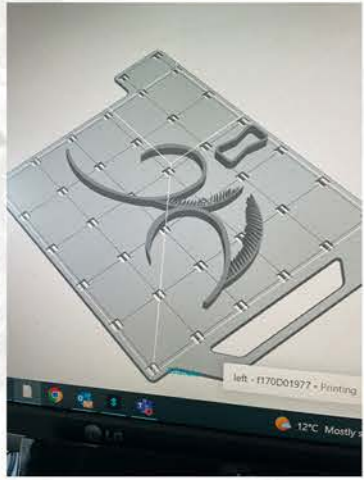
200

150

100

50

I designed a brooch in Illustrator and use a 3D printer to print my design - First Look



Syringe hand bag - first Look

Black leather gloves to go around the heel and hold onto the ankle - First Look



Second Look
print shoes



Print hand bag -
Second Look



Final Shoe





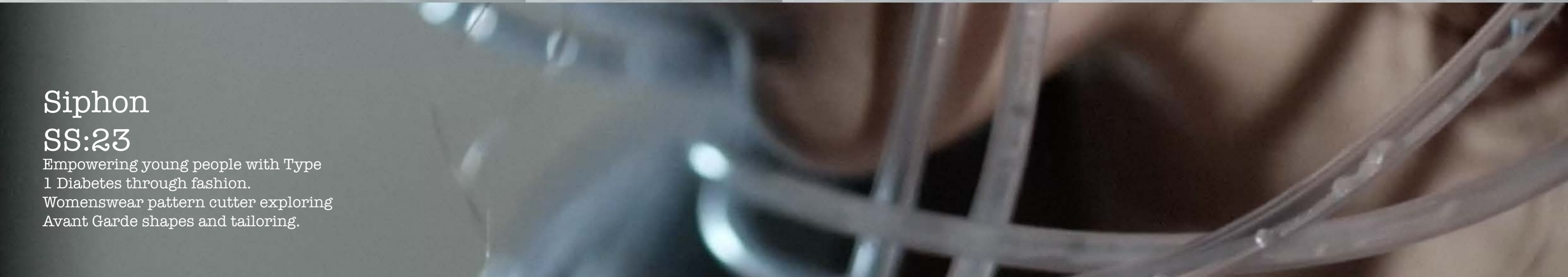
Siphon
Hollie Lesley Haughin



Siphon

SS:23

Empowering young people with Type 1 Diabetes through fashion.
Womenswear pattern cutter exploring
Avant Garde shapes and tailoring.



Look One



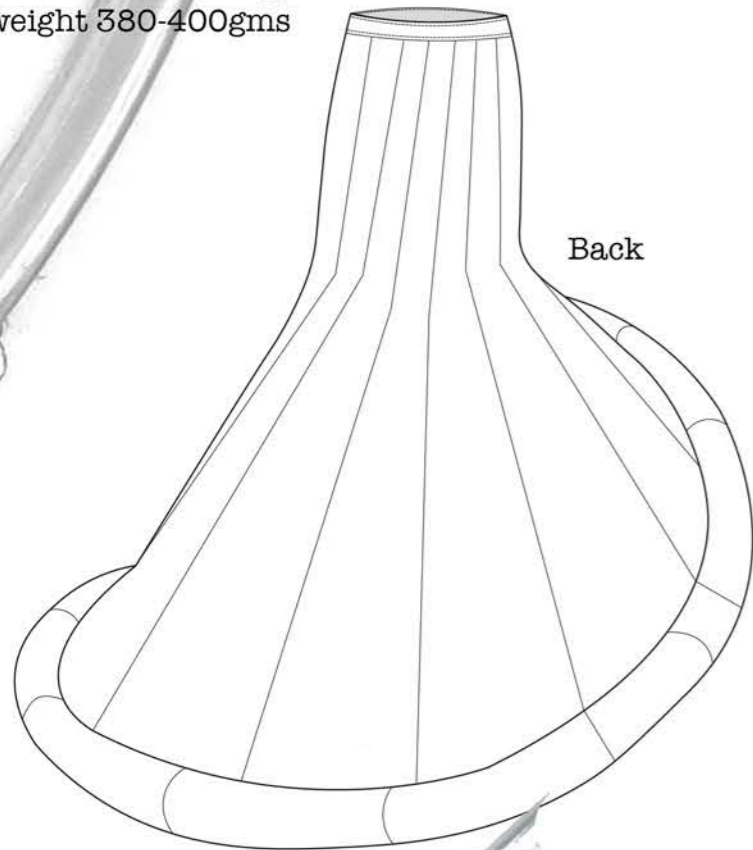
Fabric
Class O Insulation tube
and Polyester foam balls

54" All Cupro
Deluxe Satin Lining
- Onyx, Black,

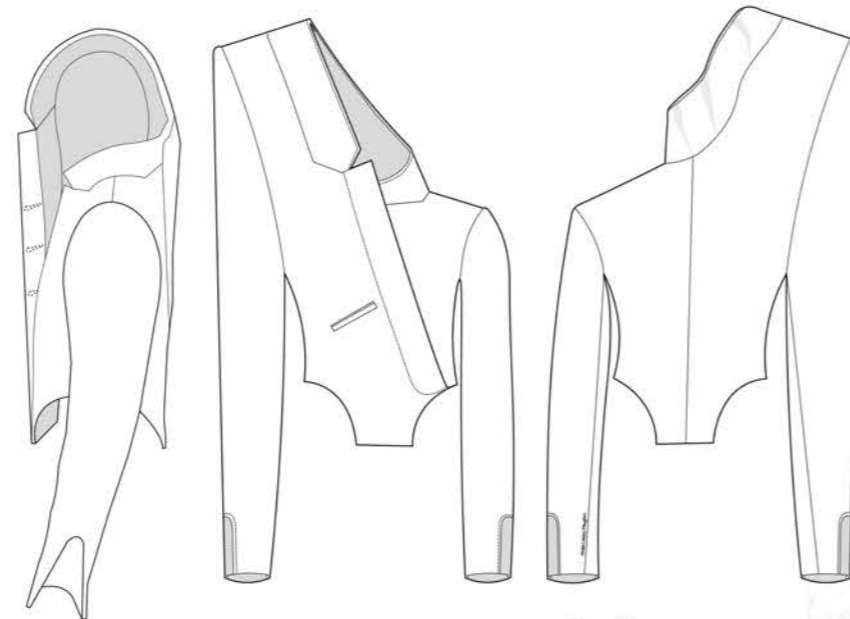
Black Four Way Stretch Jersey,
Composed 95% polyester 5% Spandex.

Polyester Duchess Satin Contessa
, Silver

Black 100% wool woven
and finished locally,
weight 380-400gms



Back



Side

Front

Back

Look Two



Fabric

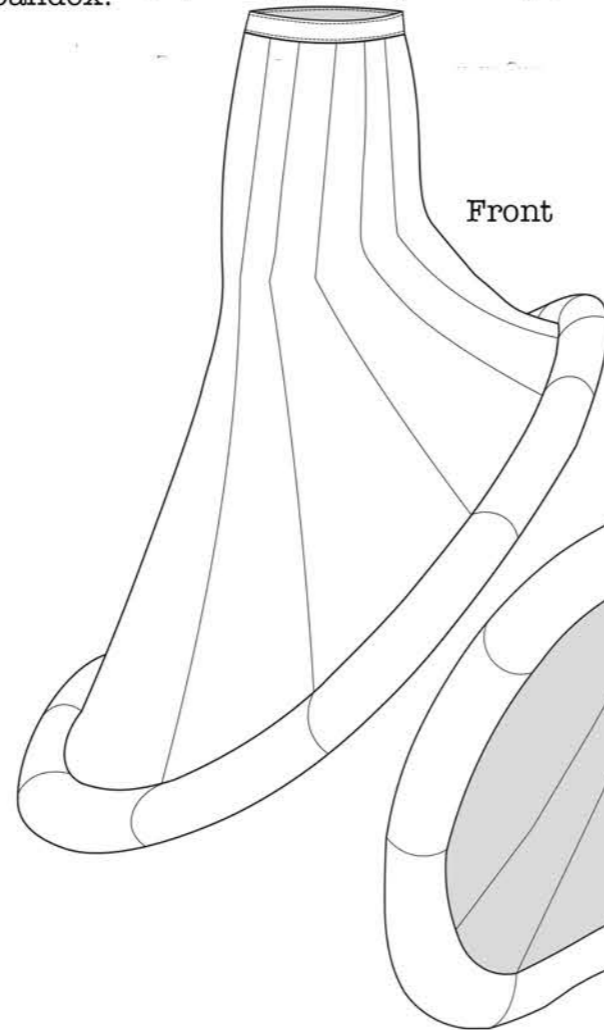
Satin Polymid Stone
100% Polyamide Weight 265 g/m
Circular Fabric Standard

54" Acetate/Viscose Satin
Lining cream.
Width 150cm

Technical Flats

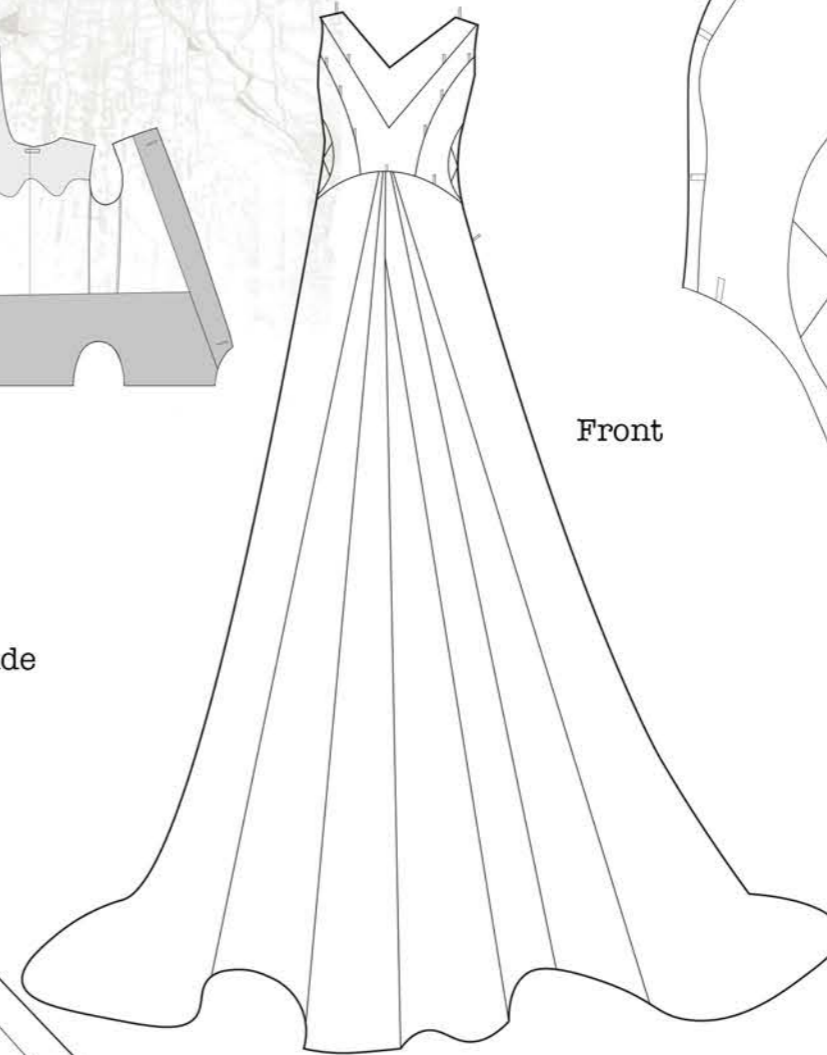
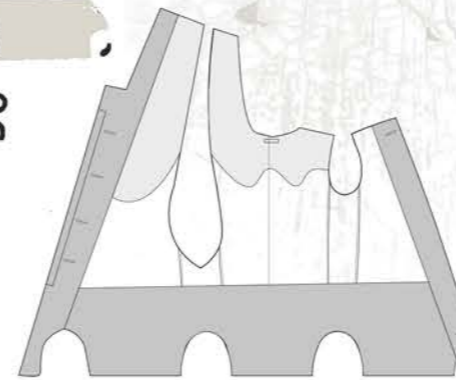
250 200 150 100 50

Inside of Jacket

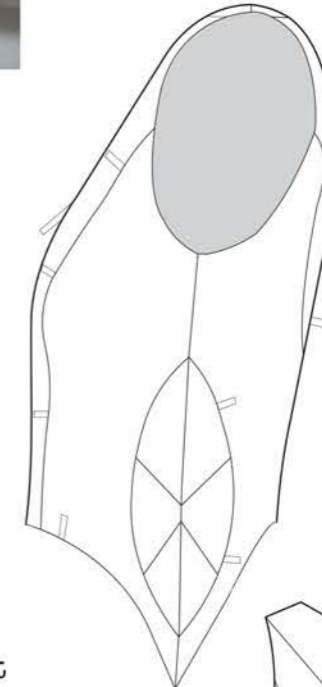


Front

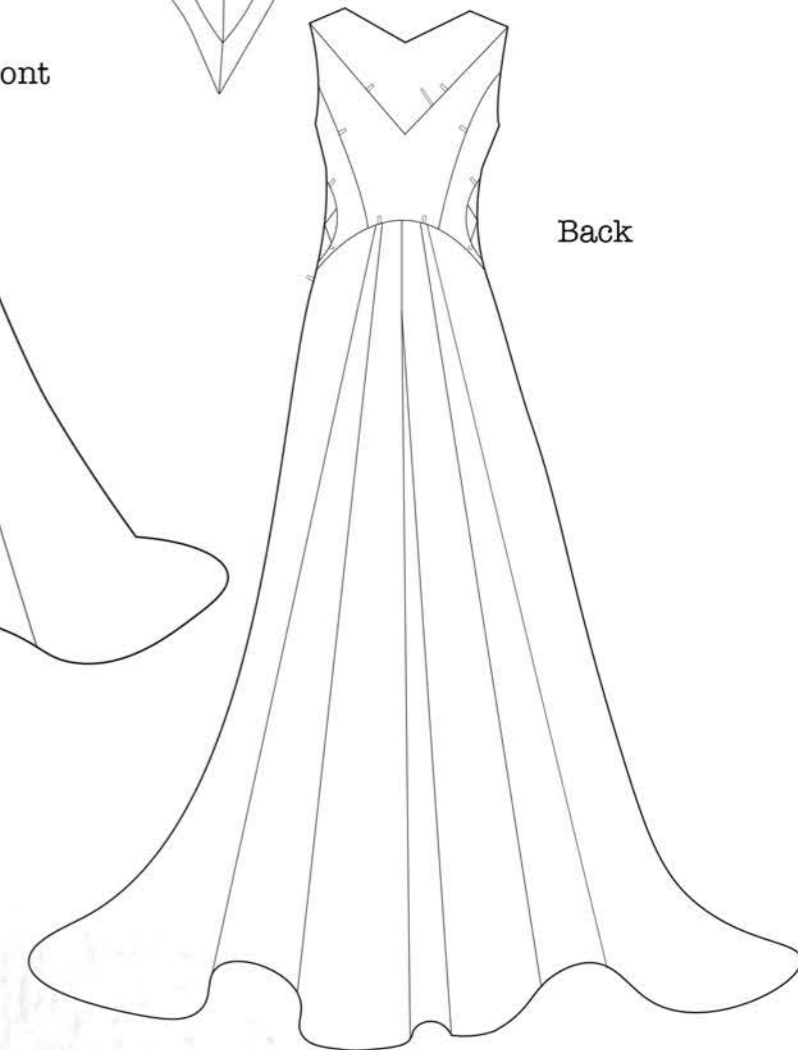
Side



Front



Close up
Side view



Back

Siphon SS:23

Hollie Lesley Haughin



Concept

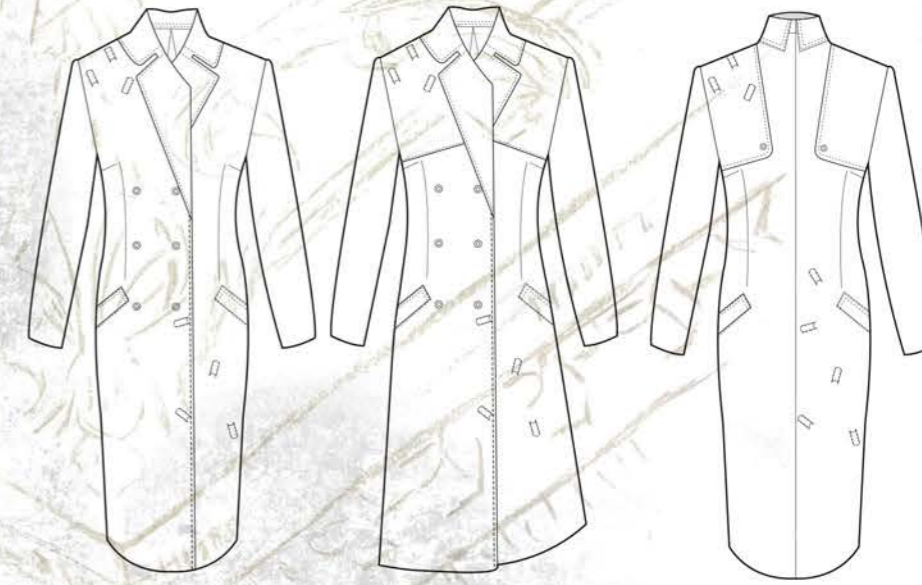
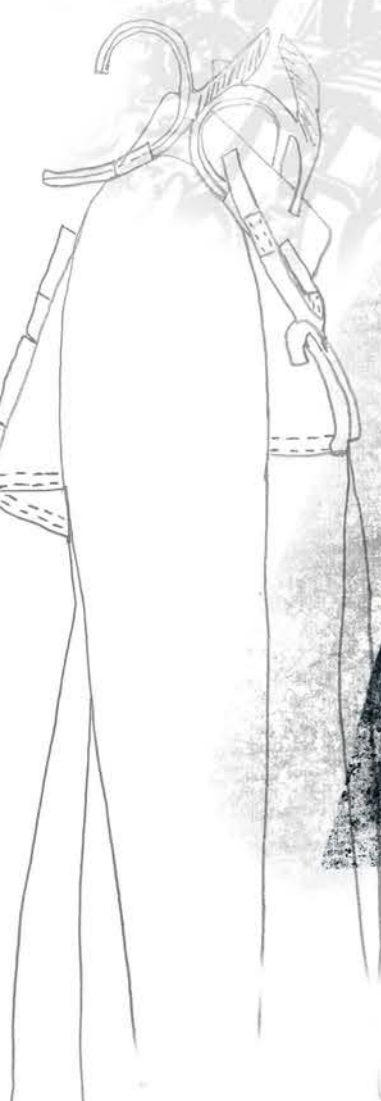
My Concept is inspired by generating more awareness of these challenges I have to face being dyslexic. I have taken interest in trench coats and the womens body, but I want to adapt them to fit my own creative style therefore I will use 3D printing inspired by Dublin castle plaster ceilings.



I have taken inspiration from plaster ceilings as being dyslexic I see a lot of objects 3D.



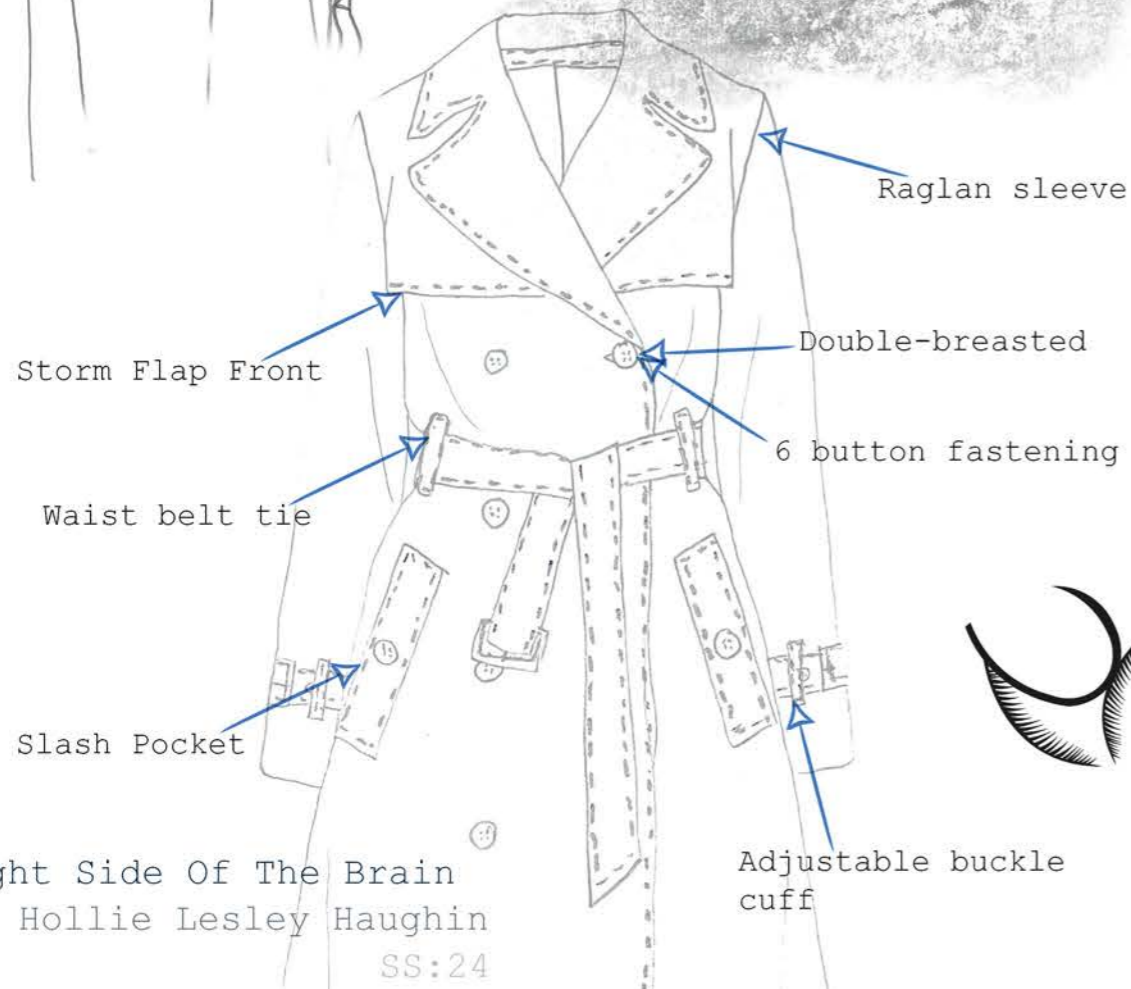
TrenchCoat Development



One piece sleeve fitted trench coat

Design Details development

Design development experimenting with collar and storm flap



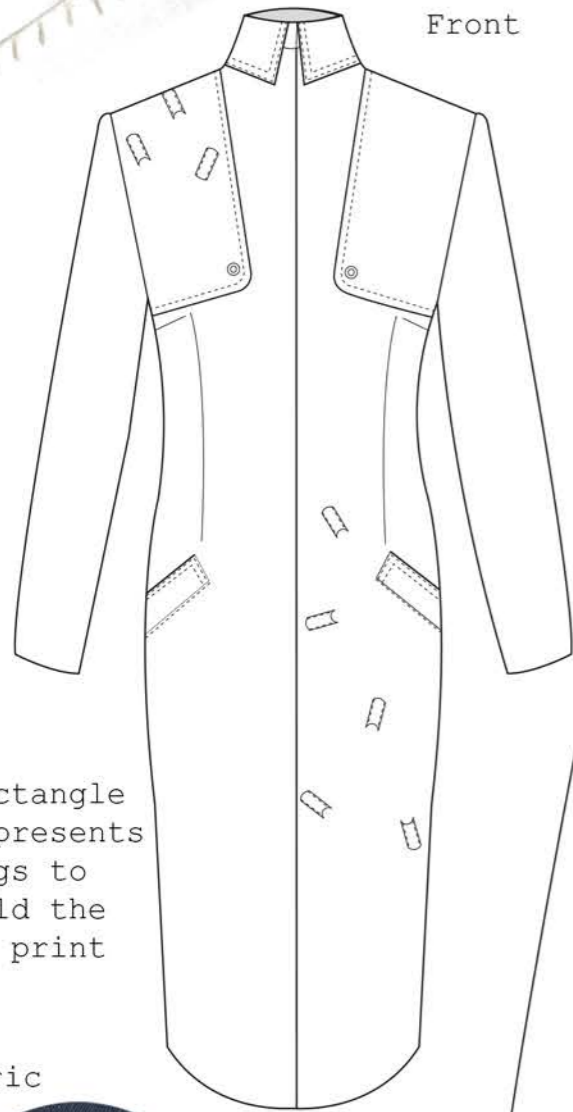
3D printed - thickness 1cm





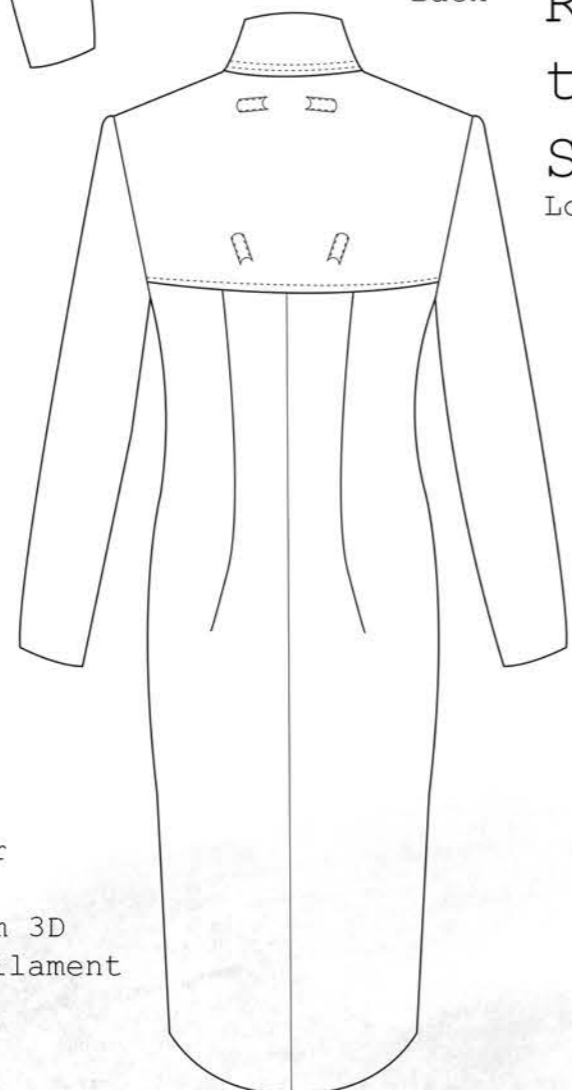
Right Side Of The Brain
Hollie Lesley Haughin
SS.24

Technical Flats



Front

Rectangle represents tags to hold the 3d print



Back



Fabric
Navy Blue Gabardine



3D printer fabric
PLA 1.75mm 3D Printer Filament

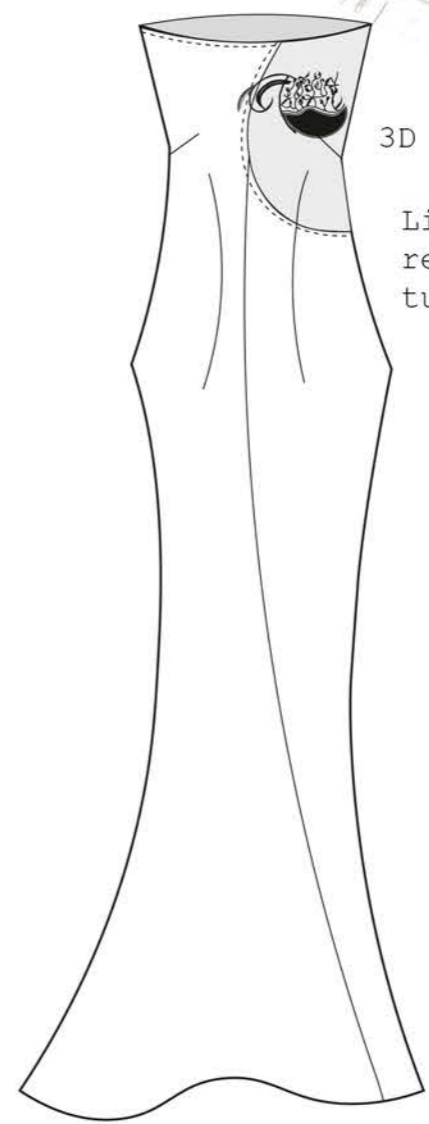


Right Side of the brain

SS:24
Look One

Right Side of the brain

SS:24
Look Two



Front

Fabric
Black Tulle

3D print

Light grey represent tulle



Back wool & Satin



3D printing fabric
AYO TPU Flexible Filament

