

Isabel Ayling

izzyayling@gmail.com

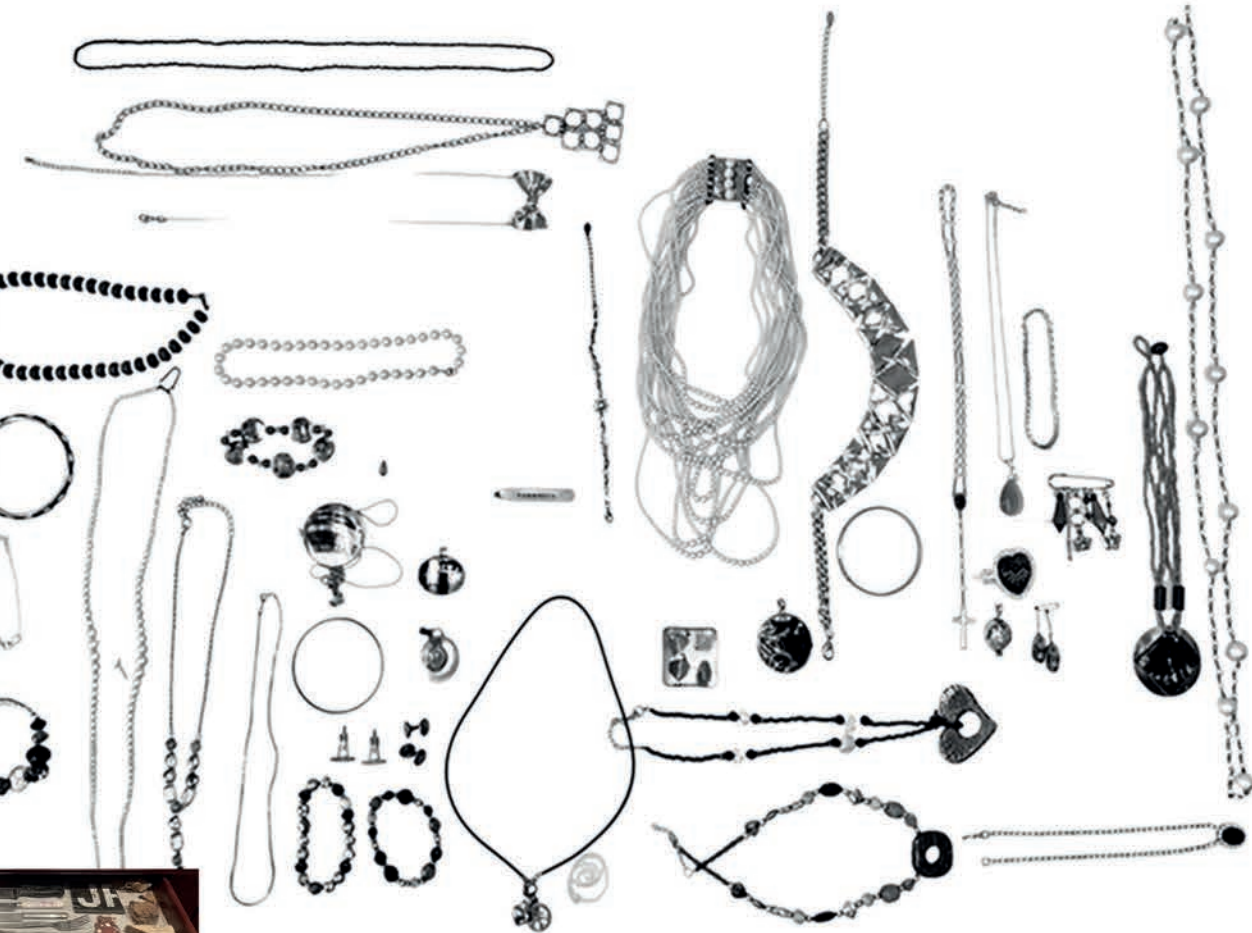
+44 7743408536

*Fashion & Textiles BA (hons)
University of the West of England*

Inspired by the concept of personal collections and research into jewellery as well as the sentimentality it often holds the project looks to pieces that can be handed down through generations that have come and gone, and how this can translate to Fashion. Quality jewellery and hardware maintains longevity and is likely made to last, whereas the same importance may not always be placed upon modern fashion. Applying these philosophies to my own fashion practises leads me to combining high quality knitwear fibres with brass hardware; looking to create a piece that will be a cherished piece of memorabilia handed down for centuries to come.

The end result of this concept being; a Mohair knitted dress, divided by panels of hand sewn, hand cut, brass tube, of varying lengths, expanding in scale totalling to around 25 metres of brass tubing. Creating a feature piece of embellishment that holds together the body of the knit, a high quality piece that should last a lifetime and beyond.

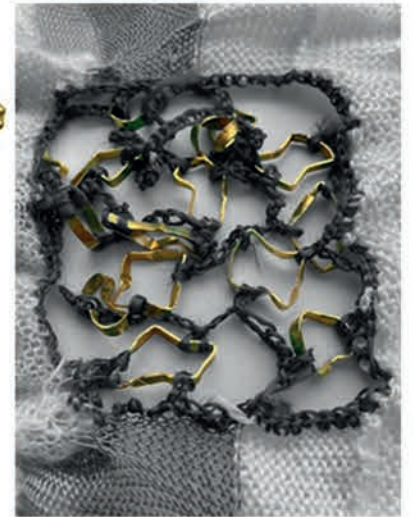
The Heirloom



Karen Nicol



Thames Dig. Mark Dion



The Heirloom

The theme of jewellery and collection serves as inspiration for this project. Jewellery is often a gift or handed down through generations as a family heirloom and exploring themes of connection and continuity through my pieces reflects this process. Considering the crossovers between jewellery and fashion, the two are combined, creating pieces that incorporate the sentimentality surrounding jewellery and the beauty of fashion and textile, in new and innovative ways.

The analysed market reflects a refined colour palette, using a deep black and rich gold. The project explores texture and tactility with the contrasts of fibres and hardware. Using, Italian Superchigno Mohair for the body of the knit to capture a soft, textured natural fibre in comparison to the cold, harshness of the tubing.

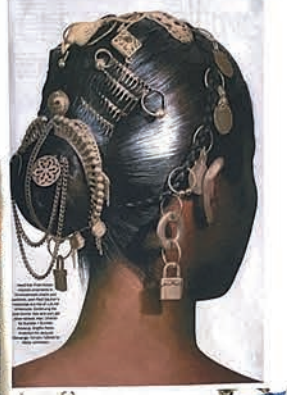
The use of natural fibres in the knit piece combined with the brass of the hardware means it would be very durable and is a sustainable piece. In addition, its intended use is as a family heirloom, which is passed down in the same way jewellery may be, therefore promoting longevity.

Jewellery collection wears a life story-gifts from loved ones, inherited heirlooms, each has an associated memory



Jewellery-The Body Transformed

Bridget Hall for Jean Paul Gaultier



Schiaparelli



Charms are a talisman, being luck love and religion



Isabella d'Ornano

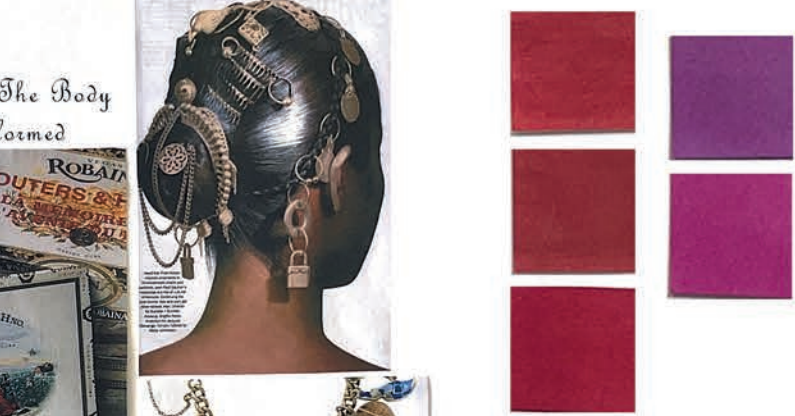
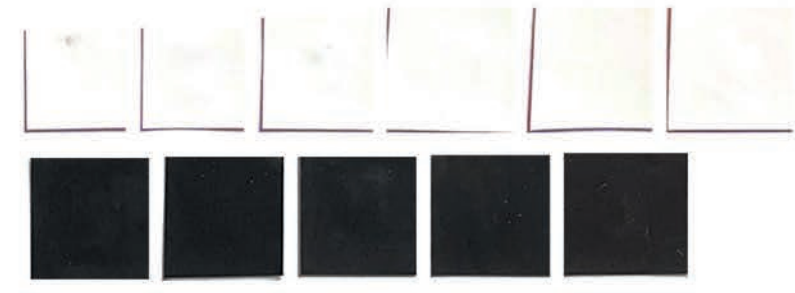


Alessandro Michele



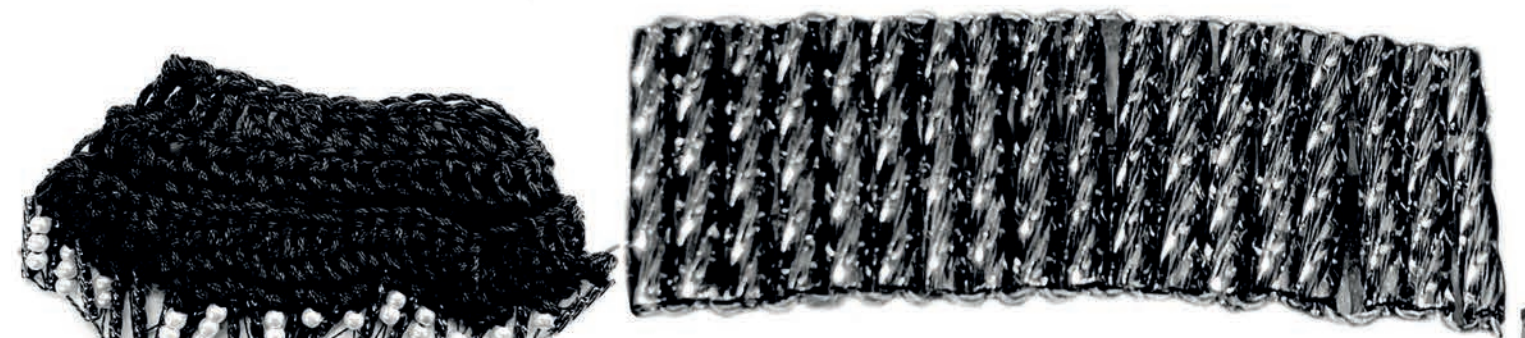
Daphne Guinness

Charming-The Magic of Charm Jewellery





Crochet stitch manipulates shape of beading into a curve. Potential collar/cuff detailing



Threading & weaving glass beading tubes and crochet using embroidery floss in the space between each bead, using a mesh stitch and double crochet



Schiaparelli

Crochet into jump loops of jewellery-4 double crochet stitches into each loop to create a ruffled edge



Broad collar of Ulfar-The Met



Azra

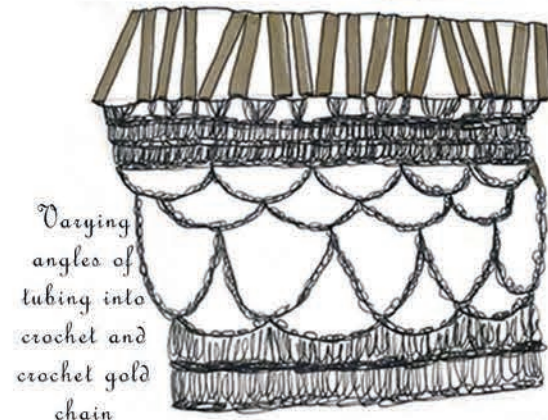




Ruffle collar with costume jewellery



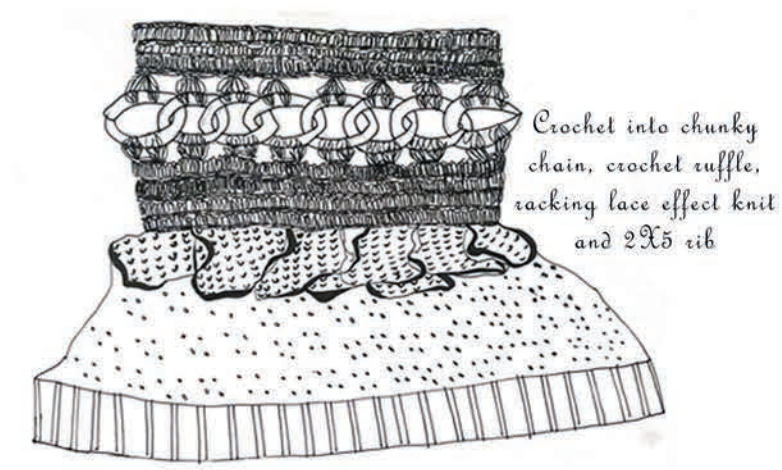
Layering ruffles, crochet & tubing



Varying angles of tubing into crochet and crochet gold chain



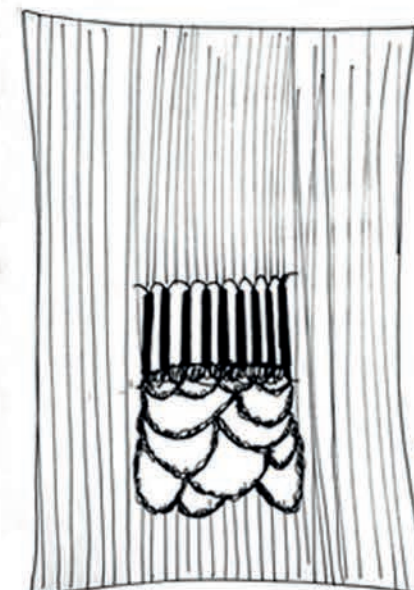
Tubing connected to crochet chain



Crochet into chunky chain, crochet ruffle, racking lace effect knit and 2X5 rib

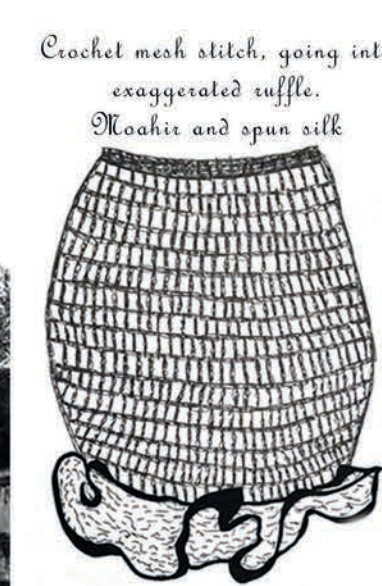


Curved tubing connected to crochet ruffle, with attached 10gg single bed tension 10 mohair knit, centred with horizontal tubing, connected with crochet



Double crochet and mesh stitch, hooked onto needles of 8gg, double bed all needles. Leading into woven together tubing and crochet ruffle at the hem

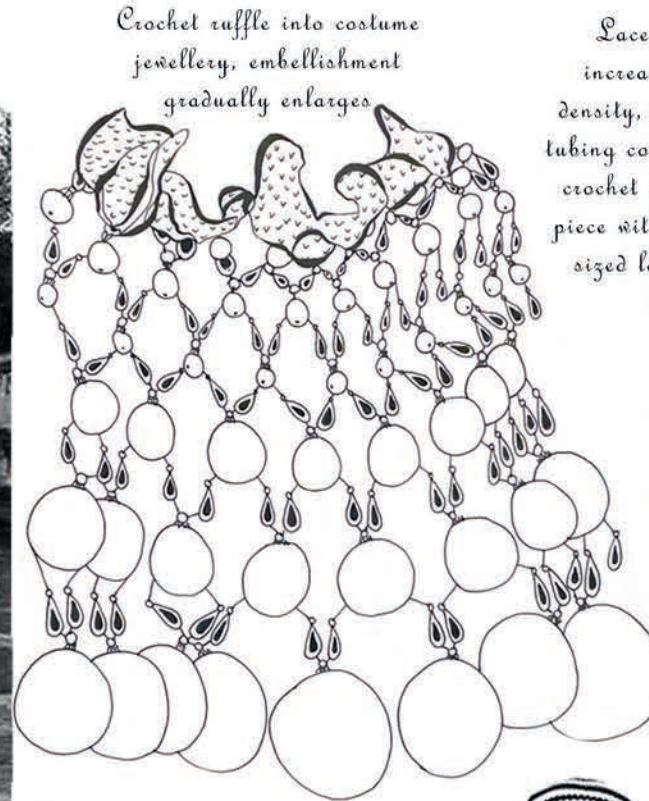
Tubing interlaced with metal chain, then weaving around the edge of the knit cut out, leading into crochet chain



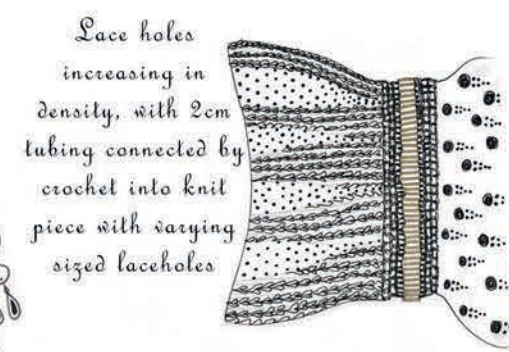
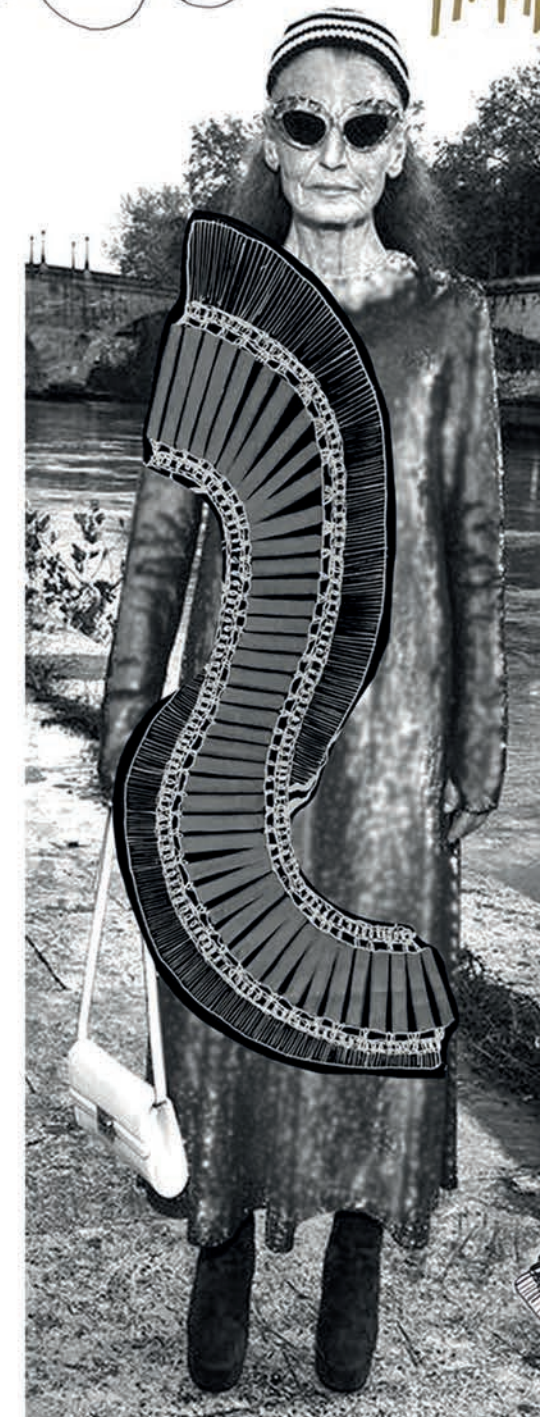
Crochet mesh stitch, going into exaggerated ruffle. Mohair and spun silk



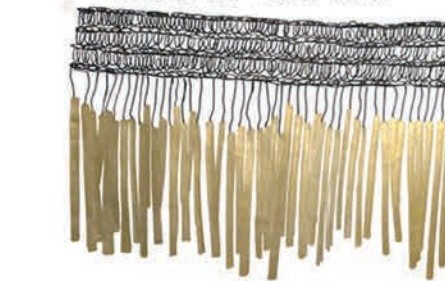
Weaving chain cut out inset



Crochet ruffle into costume jewellery, embellishment gradually enlarges



Lace holes increasing in density, with 2cm tubing connected by crochet into knit piece with varying sized laceholes



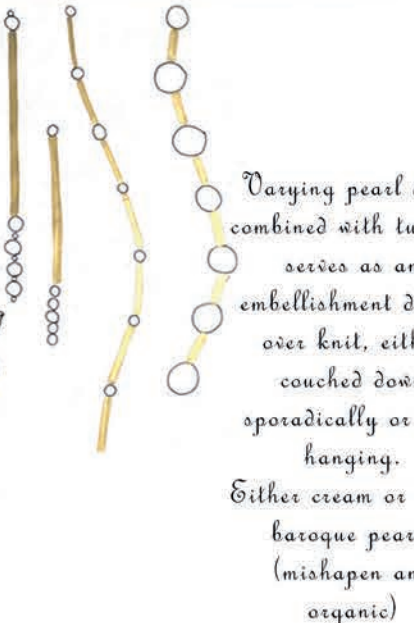
Crochet mesh stitch, attached to free hanging tubes with gold chain. Would have weight to it & make beautiful clinking noise as the wearer moves



Oversized collar piece, featuring spaced out tubing, with crochet ruffle finishing



Single bed 8gg mohair, connected to horizontal tubing with crochet stitch, woven in geometric design with increasingly large pearls separating each tube



Varying pearl sizes combined with tubing, serves as an embellishment detail over knit, either couched down sporadically or free hanging. Either cream or black baroque pearls (mishapen and organic)



Incorporating the chain into knit.
Cream mohair, standard gg domestic machine, tension 8.
Using partial knit to knit either side of the piece separately and hanging the crochet chain insert onto the needles to knit it into the stitches.

Schiaparelli

Jewellery: The Body Transformed



Crochet with unconventional materials.
Threading delicate gold plated chain through brass tubing, then crocheting with the chain into the joins created in an organic, scallop structure.
The fine chain has good drape contrasting to the structured and rigidity of the tubes.

Excess chain drapes off the shoulder

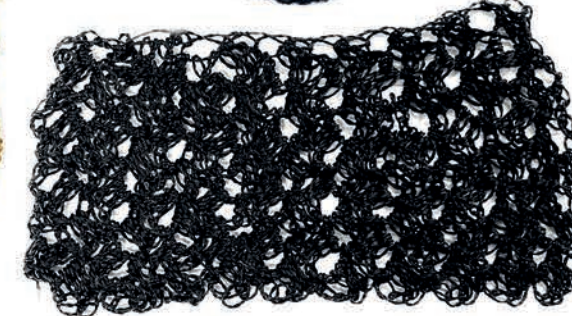


One end of brushed acrylic one of lurex on a standard g domestic, tension 4.
Experimenting with exaggerated ladders and lace holes



Tubing continues around figure

Freestyle crochet with metal chain, using jump loops to secure stitches & maintain shape



Double crochet stitch with brushed acrylic into jump loops and crocheted with one end of brushed acrylic and one of metal chain, creating a chain accent.
This adds a cold, dense weight to the fluffy texture of the knit

Experimenting with scale of hardware.
Handpainted gold oversized chain, crocheted into with brushed acrylic.
Has potential to form the base of a garment. Could form the neckline and piece could hang from the crochet



Intarsia-Brushed acrylic & lurex.
Replicating organic curving shapes chain makes with a lurex



Crochet dutchess lace stitch in viscose.

Crochet lace stitch with viscose.
Creates a natural curve but lace holes look geometric



Crochet rib stitch with viscose ribbon.
Rib stitch creates exaggerated highs and lows but is density of the ribbon creates an irregular and unpolished finish

Lace effect crochet with brushed acrylic.
The texture of the brushed acrylic looses the definition of the lace effect



One end brushed acrylic, one lurex.
Adds definition to the lace holes but creates sporadic lines

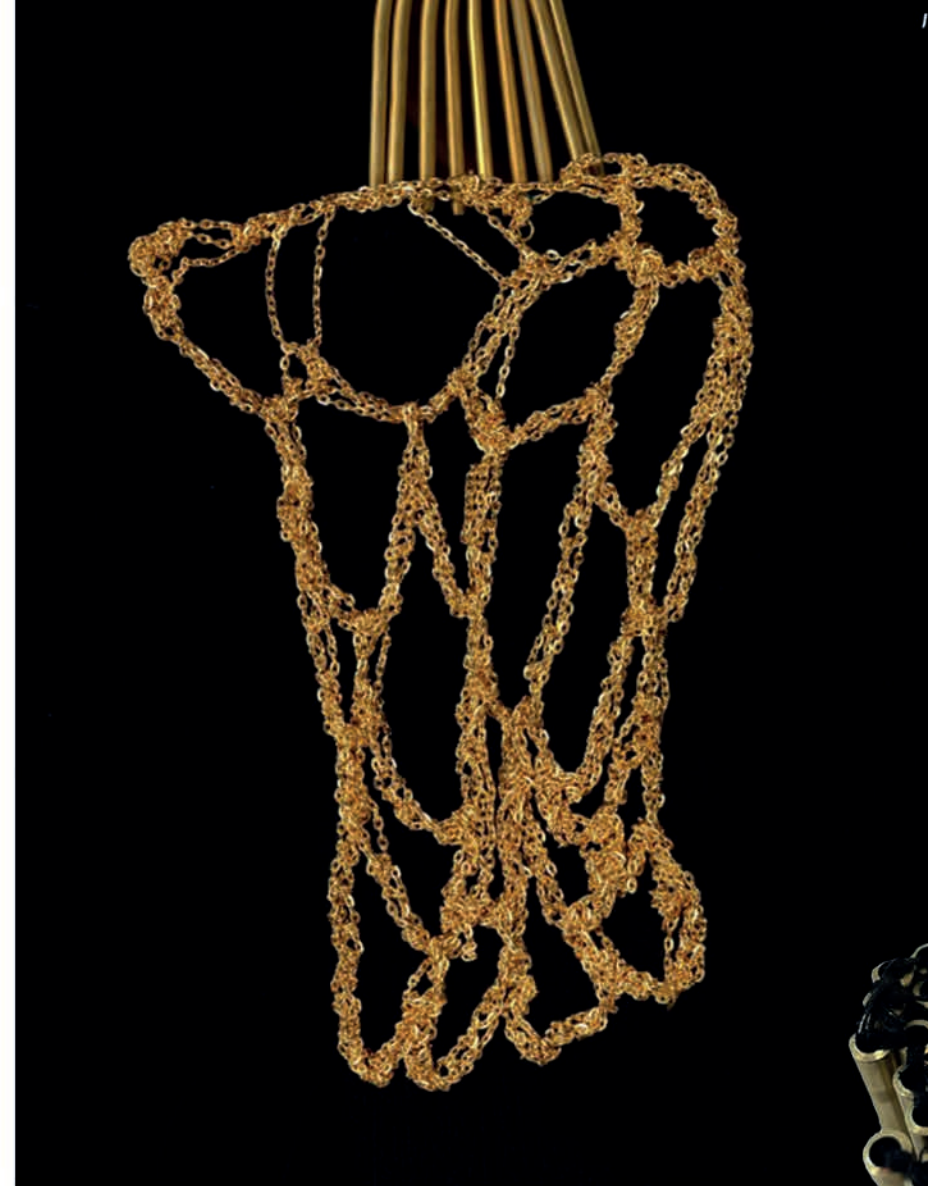
One end of brushed acrylic, one end lurex. The combination softens the wiry texture of the lurex. Ombre brushed to soften & add further texture



Double bed brushed acrylic-more dense & has more stretch, creates a rib-like effect



Hand-cut brass tubes in varying size to experiment with scale & creating a gradient



McQueen
Jewellery/embellishment as structure of the dress, compliments a simple, classic silhouette



Karris Reed

Crochet chain connected to knit.
2 ends of silk 10gg, all needles, half cardigan set up, into full cardigan



Tubing as shoulder straps-top heavy bodice detail



Wraps around the figure

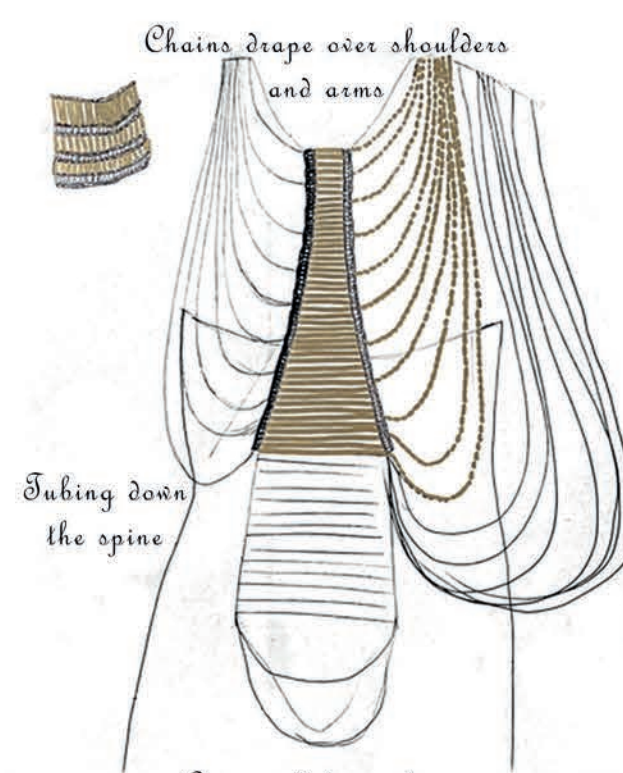


Tubing balances the silhouette, distributed at top and bottom



All tubing connecting in one piece-all flows together, curves and follows contours of the body

Chains drape over shoulders and arms



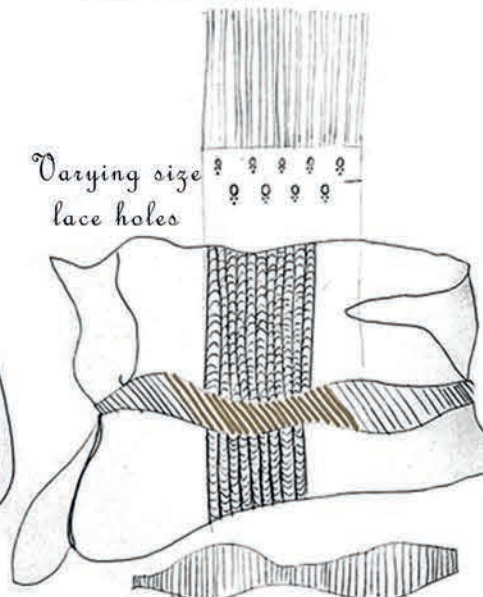
Tubing down the spine

Cut out below tubing

Tubing as trim around neckline

Fine 2X8 rib

Varying size lace holes



Developing tubing technique to ensure it will be durable as the pannels will hold together the pannels of knit.

The needle is threaded with 4 threads, each tube is sewn through twice and double knotted between each tube.



Ladders begin at the high neckline, gradually collapsing into increasingly loose ladders, then closing into dense knit before reaching the bust point



Tubing toile



Tubing wraps around the neckline and falls down the back and is all connected in one piece

Angle of the curving tube is too sharp, smoothen out line so the shape does not cut into the waist

Gold Luxex



Copper Luxex



Luxex is wirey so acts as a wearable piece of textiles jewellery



Adapting tubing lines, now skims around the body, rather than a sharp angle

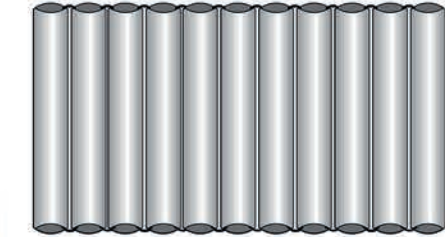
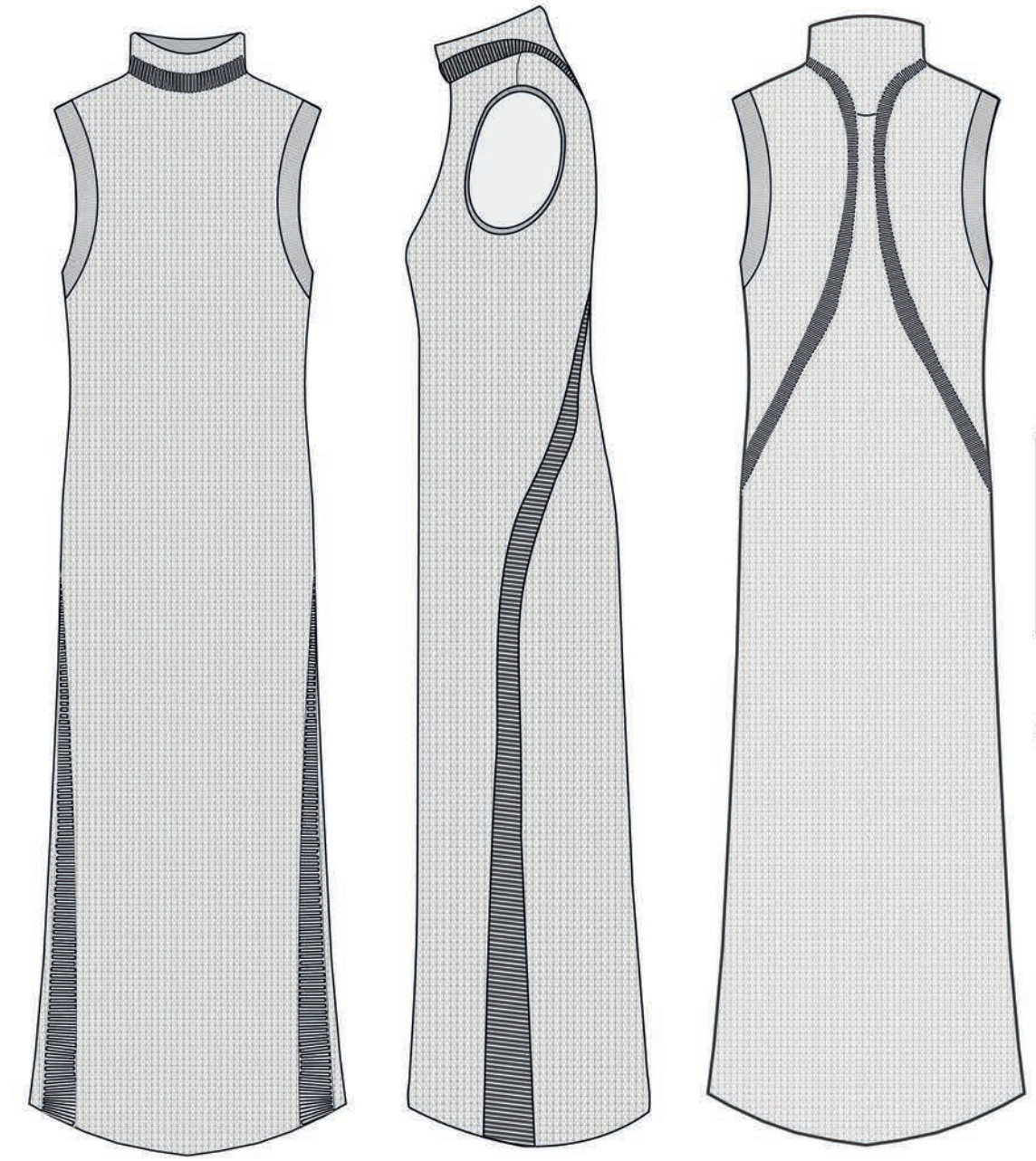
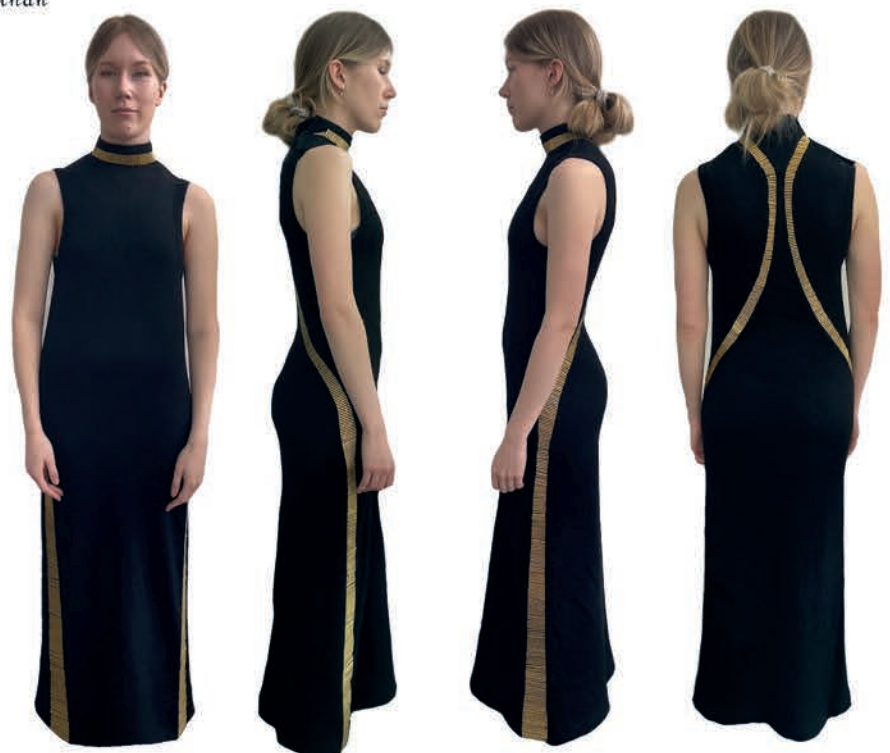
Luxex Ladder toile



Dense luxex knit at neckline-into staggered ladder knit, falling out into increasingly wider ladders and returning to dense knit at bust point and falling to the floor

Gradually increasing tension at floor break point from 1 to 3.5 to exaggerate the flair

Extended hem, puddling on the floor



Tubing technique, tubes individually cut to size, each headed four times with strong black overlocking thread and double knotted twice between each one

Dress tubing varies from 2.7.5cm. outer diameter 3mm

