



# CHARLOTTE EDYVEAN

Experimental Knitwear and Fashion Designer

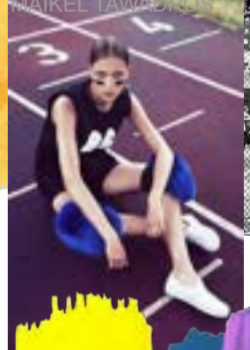
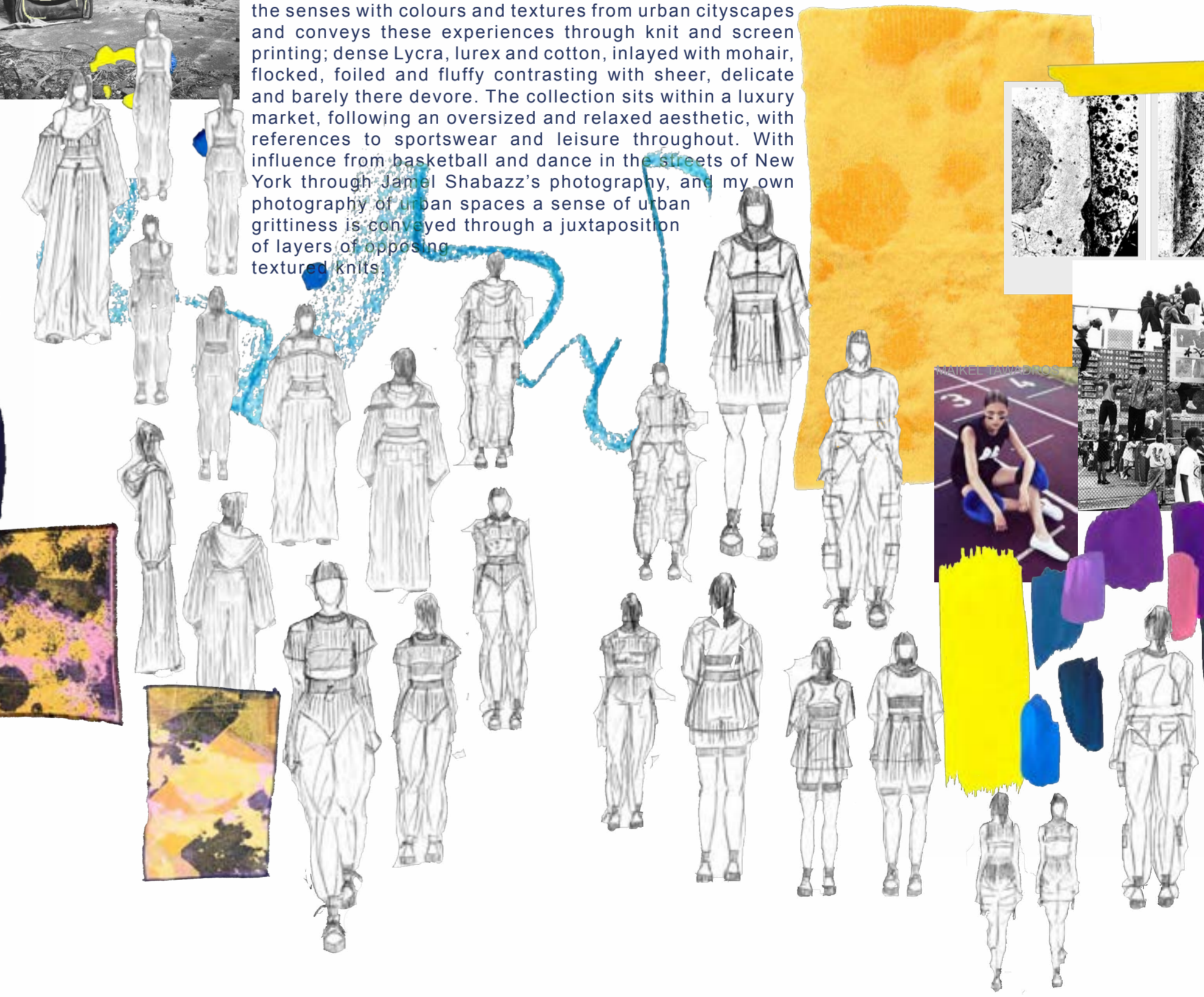
[charlottelouiseedyvean@hotmail.co.uk](mailto:charlottelouiseedyvean@hotmail.co.uk)

[@charlottele\\_\\_](#)

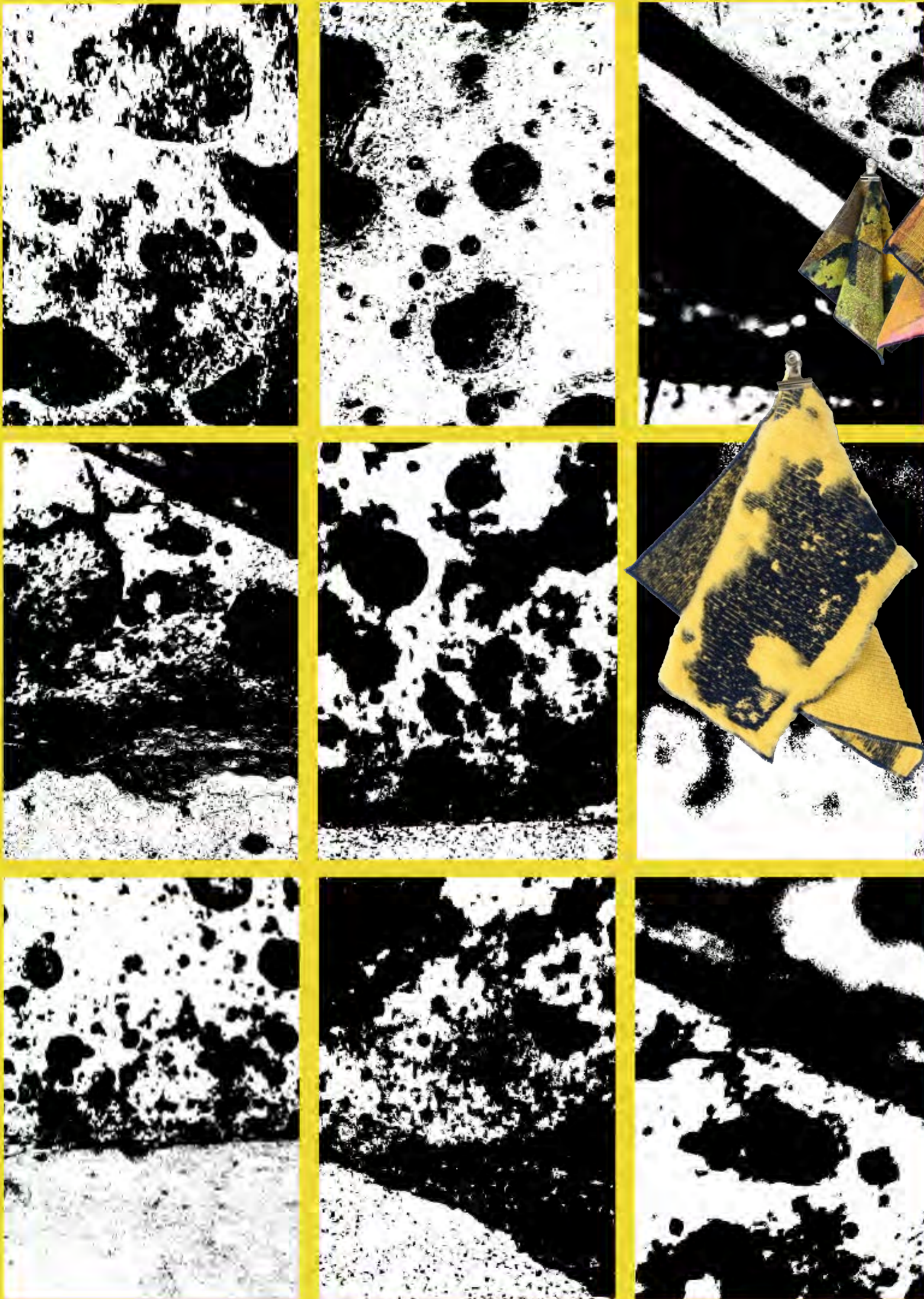
# HYPER-MATERIAL



Hypermateral focuses on over-indulging the senses with texture and colour through contrasting knitted textiles. Inspired by close up images of intricate patterns made in concrete, the concept focuses on how we miss the sense of physical touch in the modern world; moving into virtual spaces our human interaction and experiences with the world are disrupted. The collection explores an overload of the senses with colours and textures from urban cityscapes and conveys these experiences through knit and screen printing; dense Lycra, lurex and cotton, inlayed with mohair, flocked, foiled and fluffy contrasting with sheer, delicate and barely there devore. The collection sits within a luxury market, following an oversized and relaxed aesthetic, with references to sportswear and leisure throughout. With influence from basketball and dance in the streets of New York through Jamel Shabazz's photography, and my own photography of urban spaces a sense of urban grittiness is conveyed through a juxtaposition of layers of opposing textured knits.







ANT DEVELOPMENT SAMPLES

*Can't  
is done  
could  
price  
a bit  
all*

*ANT DEVELOPMENT SAMPLES*

*and with the  
same as 2017*

*That's better  
and it's  
more like  
a bit of  
black*

*Eliza's  
more like  
this*

*Don't like  
the color  
of the  
top*

*That's  
the  
look*

*Don't like  
the  
color  
of the  
top*

*That's  
the  
look*

*Don't like  
the  
color  
of the  
top*

*That's  
the  
look*

*Don't like  
the  
color  
of the  
top*

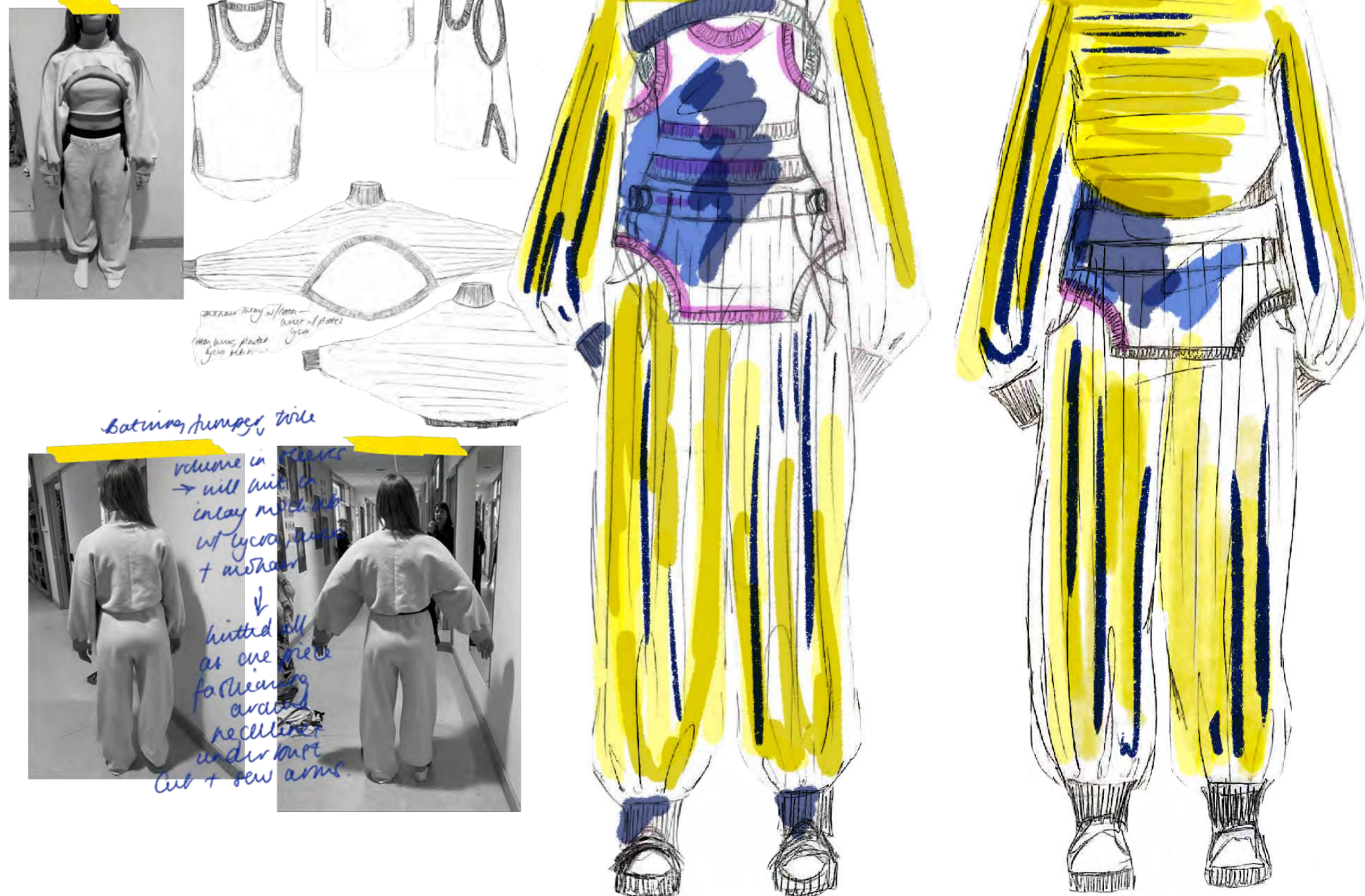
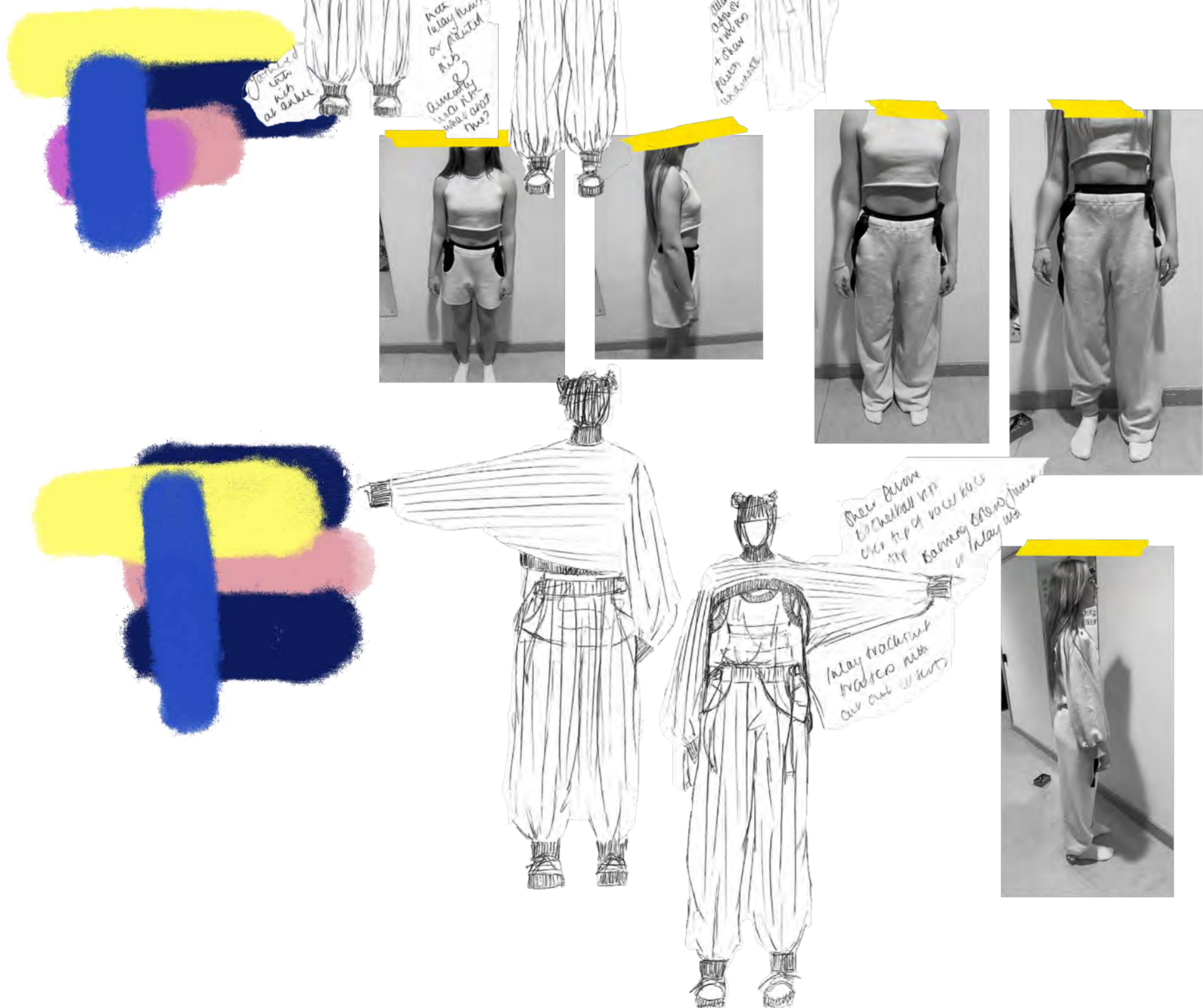
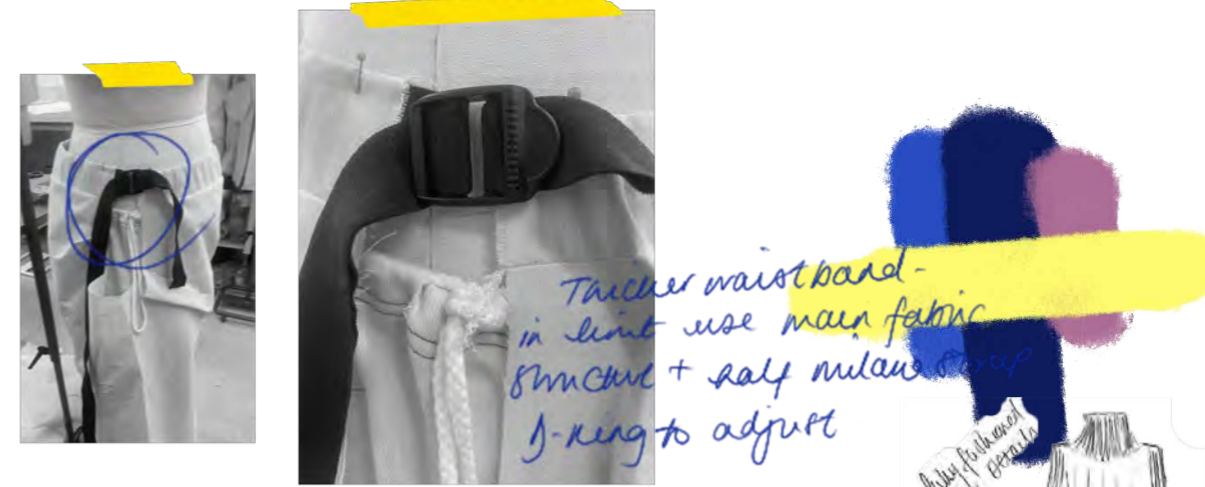
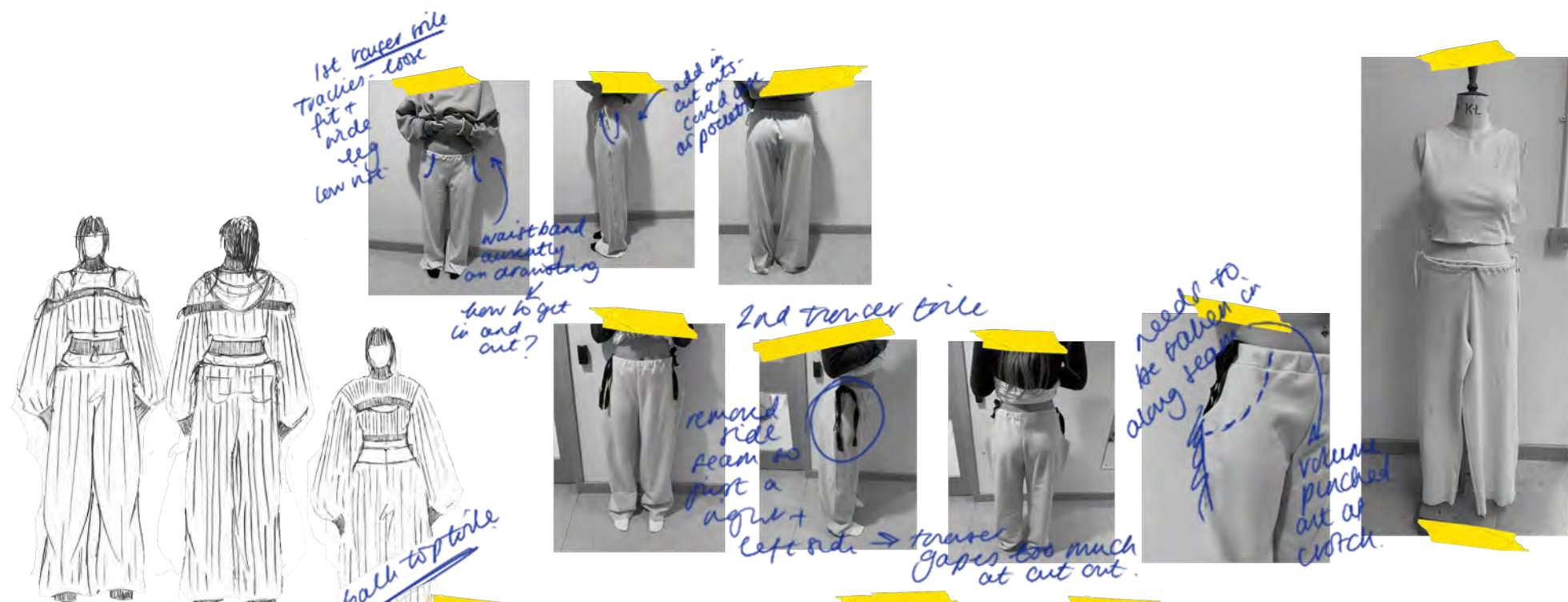
*That's  
the  
look*

*Don't like  
the  
color  
of the  
top*

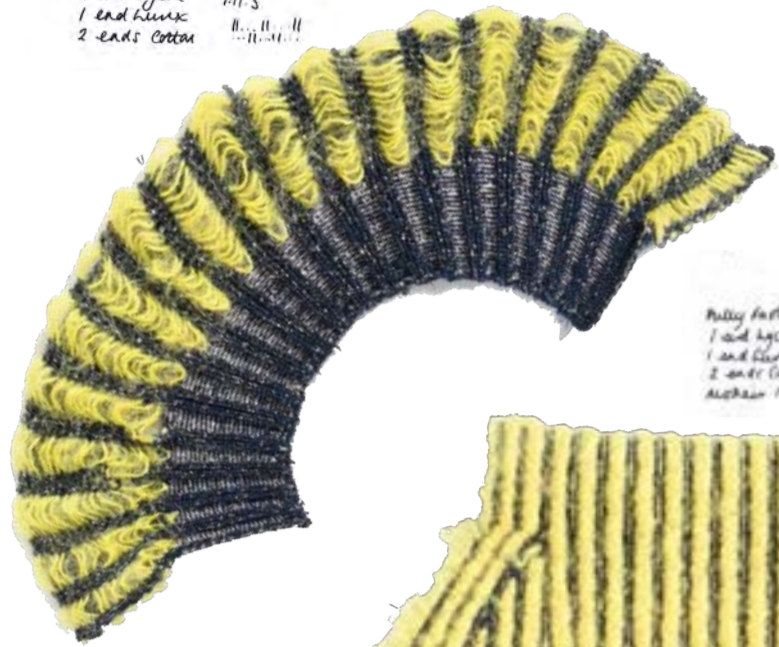
*That's  
the  
look*

*Don't like  
the  
color  
of the  
top*

*That's  
the  
look*



MOCA Rib Trim - 10gg 4x12  
1 and Lycra 7:1:5  
1 and Lycra 11:1:1  
2 ends Cotton 11:1:1



MOCA Rib Trim - 10gg 4x12  
1 and Lycra 7:1:5  
1 and Lycra 11:1:1  
2 ends Cotton 11:1:1



MOCA Rib Trim - 10gg 4x12  
1 and Lycra 7:1:5  
1 and Lycra 11:1:1  
2 ends Cotton 11:1:1



MOCA Rib Trim - 10gg 4x12  
1 and Lycra 7:1:5  
1 and Lycra 11:1:1  
2 ends Cotton 11:1:1

MOCA Rib Trim - 10gg 4x12  
1 and Lycra 7:1:5  
1 and Lycra 11:1:1  
2 ends Cotton 11:1:1



MOCA Rib Trim - 10gg 4x12  
1 and Lycra 7:1:5  
1 and Lycra 11:1:1  
2 ends Cotton 11:1:1



MOCA Rib Trim - 10gg 4x12  
1 and Lycra 7:1:5  
1 and Lycra 11:1:1  
2 ends Cotton 11:1:1



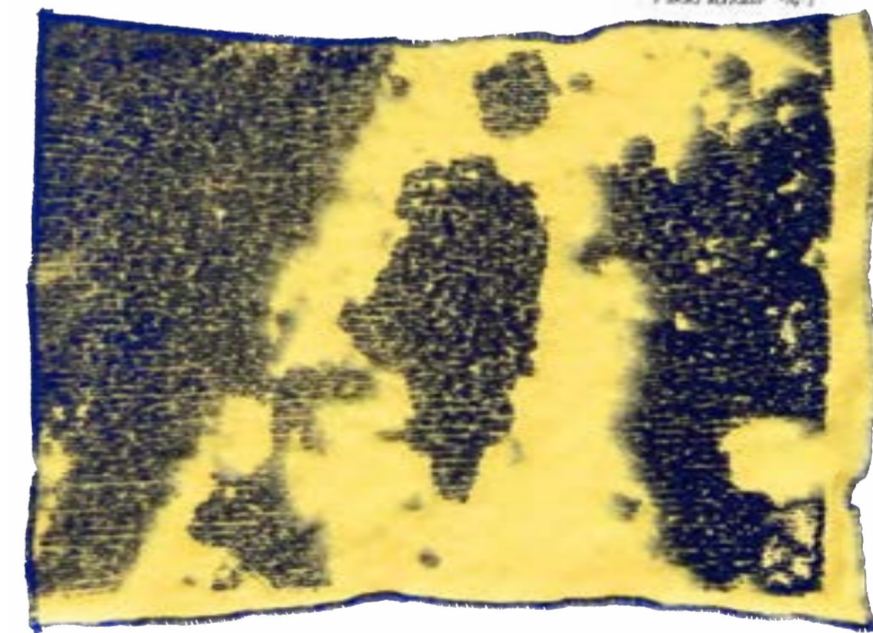
MOCA Rib Trim - 10gg 4x12  
1 and Lycra 7:1:5  
1 and Lycra 11:1:1  
2 ends Cotton 11:1:1



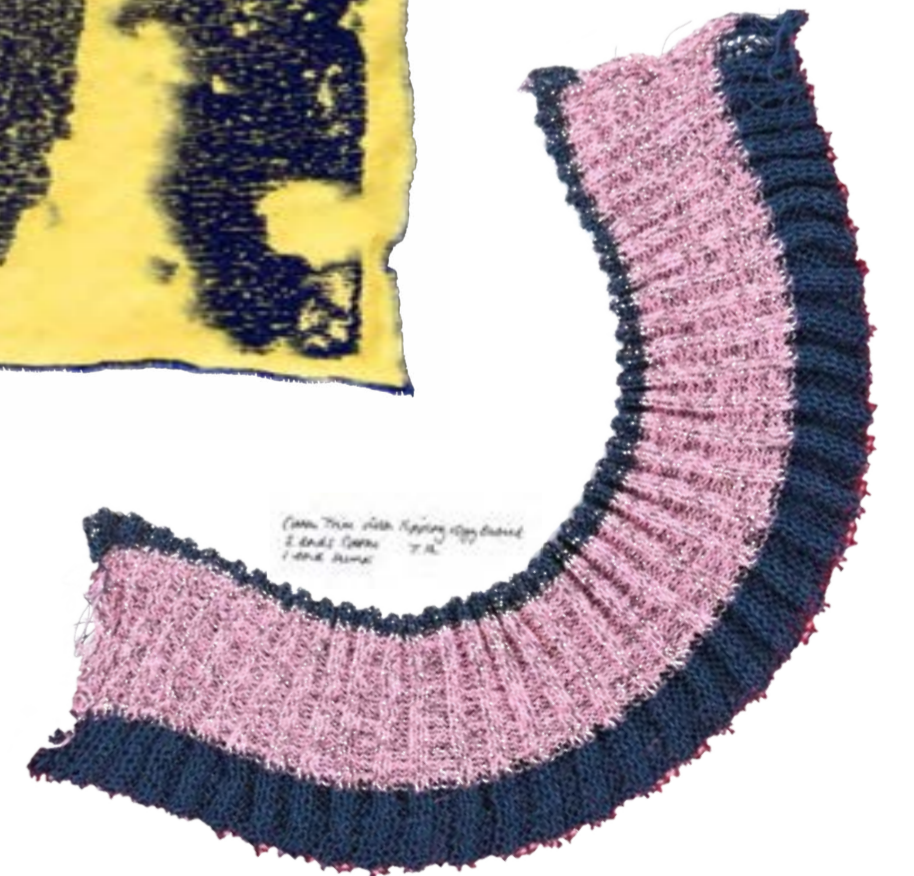
MOCA Rib Trim - 10gg 4x12  
1 and Lycra 7:1:5  
1 and Lycra 11:1:1  
2 ends Cotton 11:1:1



MOCA Rib Trim - 10gg 4x12  
1 and Lycra 7:1:5  
1 and Lycra 11:1:1  
2 ends Cotton 11:1:1



MOCA Rib Trim - 10gg 4x12  
1 and Lycra 7:1:5  
1 and Lycra 11:1:1  
2 ends Cotton 11:1:1



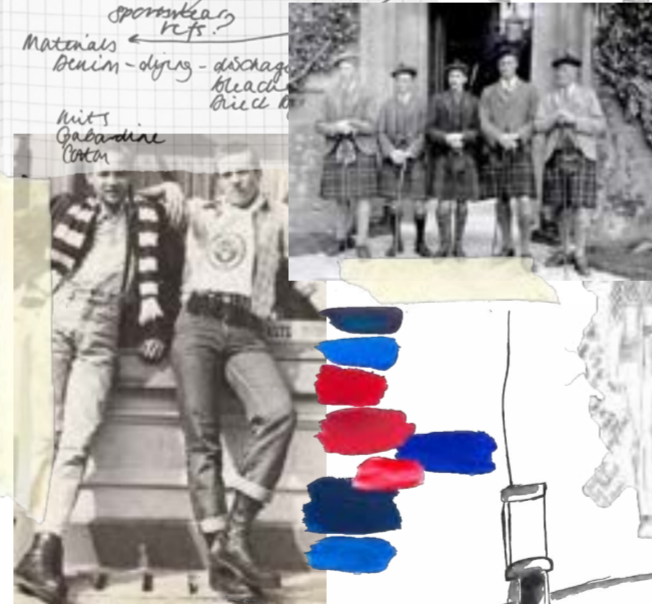
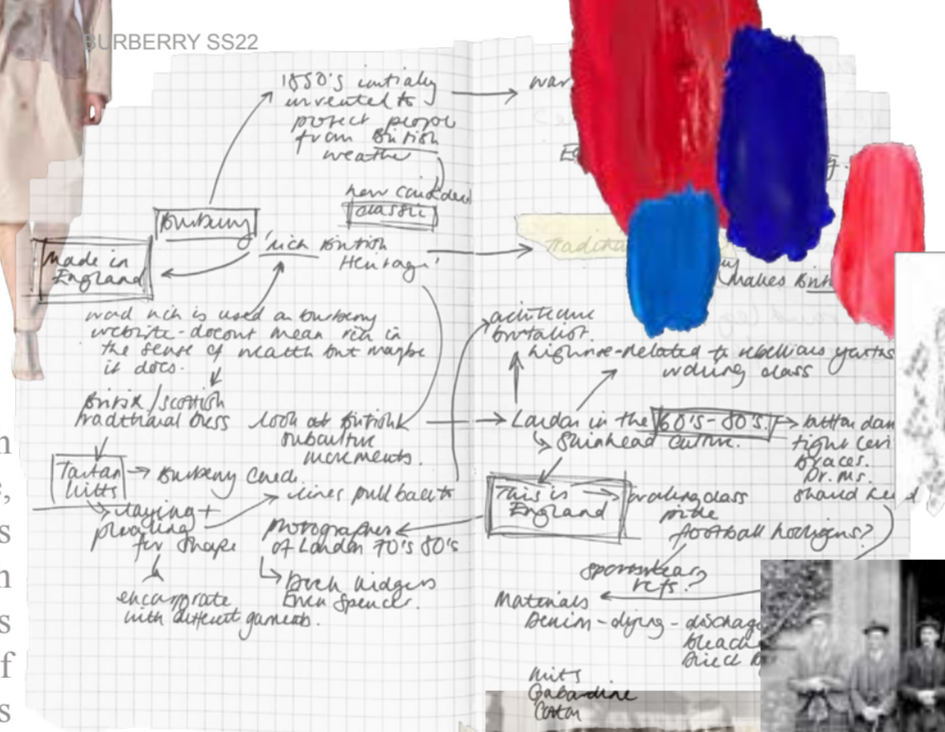
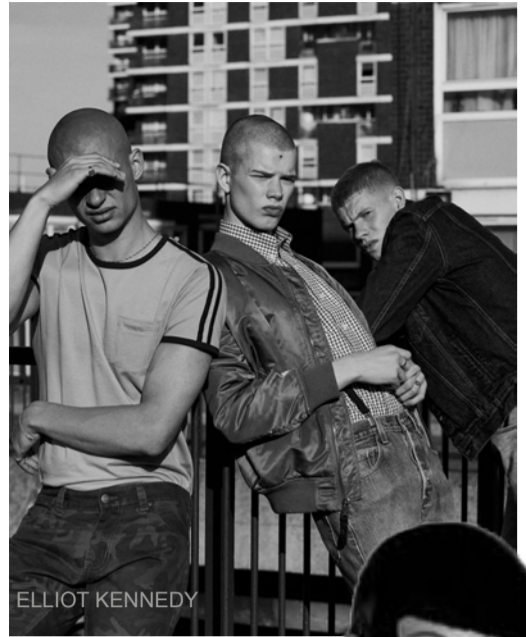




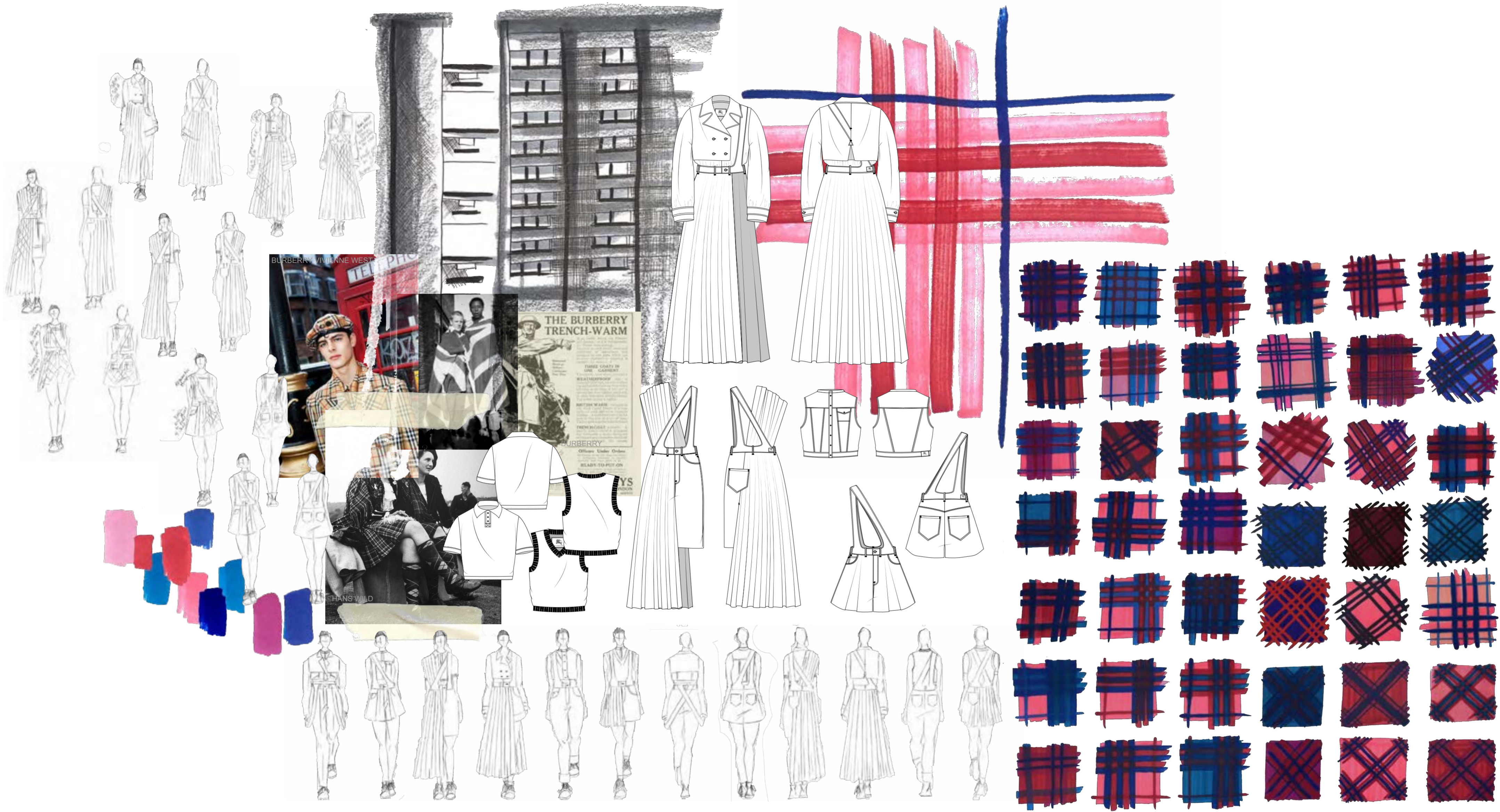




# BURBERRY MADE IN ENGLAND



In collaboration with Burberry, Made in England focuses on the British heritage; paying homage to the luxury brand's roots within British culture, and takes influence from London, and its diverse array of subcultures during the 60's, 70's and 80's. From the Skinheads and Mods, with tight high rise jeans, braces and checked shirts, the collection represents unity, solidarity and pride of the British culture; it is a celebration of working class heritage. With a nod to other more traditional influences from Britain, taking inspiration from the Highlands and traditional dress, with pleated skirts and kilts in the infamous Burberry check, that gives the brand its iconic print, whilst also taking a play on this tartan through knitted techniques and used of discharge dyeing and direct dyeing on denim. Burberry is Made in England.



BURBERRY VIVIANNE WEST

THE BURBERRY TRENCH-WARM

THREE COATS IN ONE - GARGANT - WEATHERPROOF - BRITISH MADE - TRENCH COAT - TRENCH COAT - TRENCH COAT - READY TO PUT ON

BURBERRY

HANS WILD



